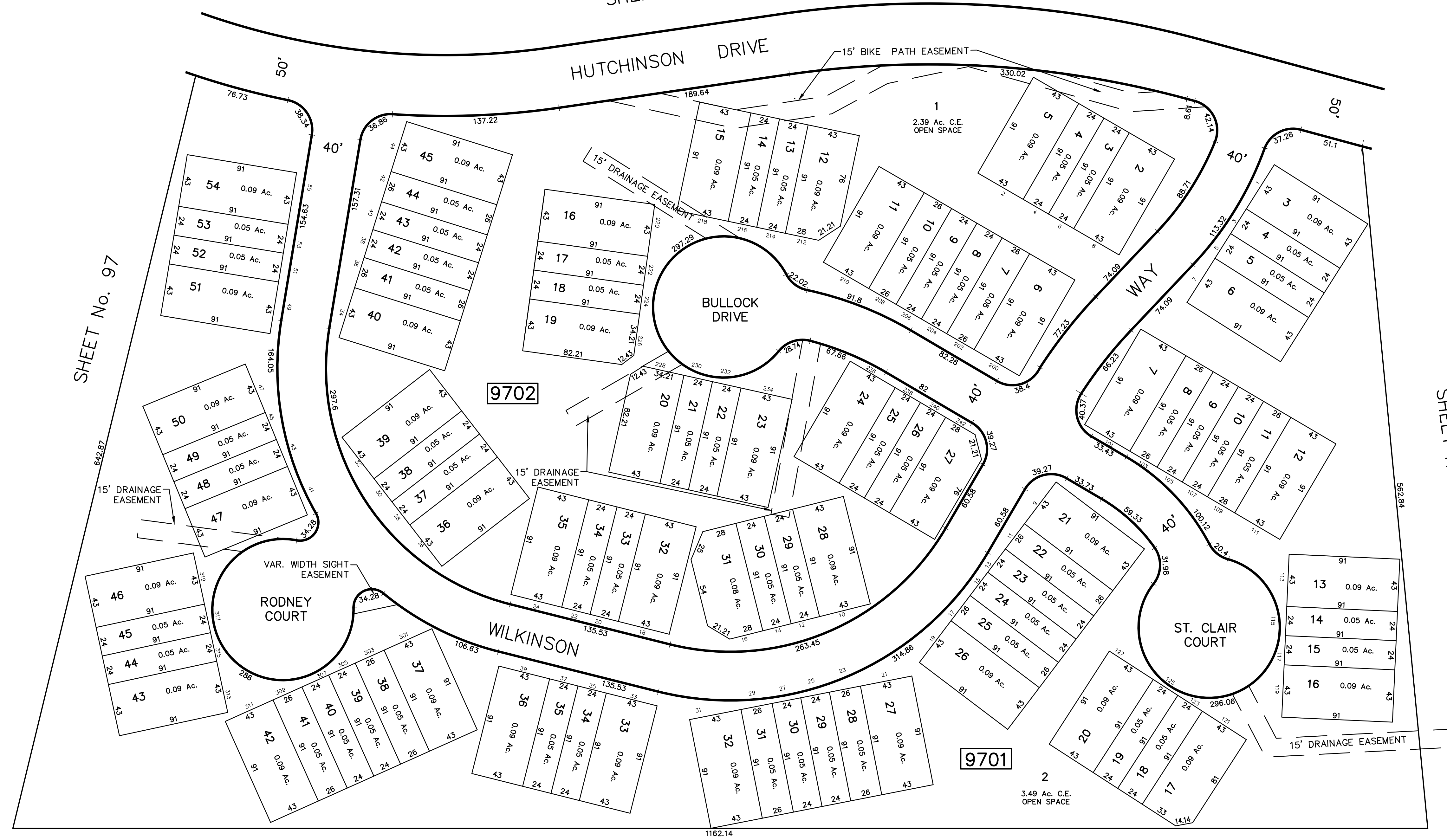


SHEET No. 98



SHEET No. 97

SHEET No. 97

SHEET No. 97

Block	Lot	Qualifier	Area	Address
9701	3		2,348 S.F.	1 WILKINSON WAY
9701	4		1,926 S.F.	3 WILKINSON WAY
9701	5		1,926 S.F.	5 WILKINSON WAY
9701	6		2,348 S.F.	7 WILKINSON WAY
9701	7		2,222 S.F.	101 ST CLAIR COURT
9701	8		2,402 S.F.	103 ST CLAIR COURT
9701	9		1,811 S.F.	105 ST CLAIR COURT
9701	10		2,003 S.F.	107 ST CLAIR COURT
9701	11		2,181 S.F.	109 ST CLAIR COURT
9701	12		2,222 S.F.	111 ST CLAIR COURT
9701	13		2,348 S.F.	113 ST CLAIR COURT
9701	14		1,926 S.F.	115 ST CLAIR COURT
9701	15		1,926 S.F.	117 ST CLAIR COURT
9701	16		2,348 S.F.	119 ST CLAIR COURT
9701	17		2,348 S.F.	121 ST CLAIR COURT
9701	18		1,926 S.F.	123 ST CLAIR COURT
9701	19		1,926 S.F.	125 ST CLAIR COURT
9701	20		2,348 S.F.	127 ST CLAIR COURT
9701	21		2,222 S.F.	9 WILKINSON WAY
9701	22		2,402 S.F.	11 WILKINSON WAY
9701	23		2,003 S.F.	13 WILKINSON WAY
9701	24		1,811 S.F.	15 WILKINSON WAY
9701	25		2,181 S.F.	17 WILKINSON WAY
9701	26		2,222 S.F.	19 WILKINSON WAY
9701	27		2,222 S.F.	21 WILKINSON WAY
9701	28		2,402 S.F.	23 WILKINSON WAY
9701	29		2,003 S.F.	25 WILKINSON WAY
9701	30		1,811 S.F.	27 WILKINSON WAY
9701	31		2,181 S.F.	29 WILKINSON WAY
9701	32		2,222 S.F.	31 WILKINSON WAY
9701	33		2,222 S.F.	33 WILKINSON WAY
9701	34		2,003 S.F.	35 WILKINSON WAY
9701	35		2,003 S.F.	37 WILKINSON WAY
9701	36		2,348 S.F.	39 WILKINSON WAY
9701	37		2,222 S.F.	301 RODNEY COURT
9701	38		2,402 S.F.	303 RODNEY COURT
9701	39		2,003 S.F.	305 RODNEY COURT
9701	40		2,003 S.F.	307 RODNEY COURT
9701	41		2,181 S.F.	309 RODNEY COURT
9701	42		2,222 S.F.	311 RODNEY COURT
9701	43		2,348 S.F.	313 RODNEY COURT
9701	44		1,926 S.F.	315 RODNEY COURT
9701	45		1,926 S.F.	317 RODNEY COURT
9701	46		2,348 S.F.	319 RODNEY COURT
9701	47		2,348 S.F.	41 WILKINSON WAY
9701	48		1,926 S.F.	43 WILKINSON WAY
9701	49		1,926 S.F.	45 WILKINSON WAY
9701	50		2,348 S.F.	47 WILKINSON WAY
9701	51		2,348 S.F.	49 WILKINSON WAY
9701	52		1,926 S.F.	51 WILKINSON WAY
9701	53		1,926 S.F.	53 WILKINSON WAY
9701	54		2,348 S.F.	55 WILKINSON WAY

Block	Lot	Qualifier	Area	Address
9702	2		2,348 S.F.	8 HUTCHINSON DRIVE
9702	3		1,926 S.F.	6 HUTCHINSON DRIVE
9702	4		1,926 S.F.	4 HUTCHINSON DRIVE
9702	5		2,348 S.F.	2 HUTCHINSON DRIVE
9702	6		2,222 S.F.	200 BULLOCK DRIVE
9702	7		2,402 S.F.	202 BULLOCK DRIVE
9702	8		2,003 S.F.	204 BULLOCK DRIVE
9702	9		1,811 S.F.	206 BULLOCK DRIVE
9702	10		2,181 S.F.	208 BULLOCK DRIVE
9702	11		2,222 S.F.	210 BULLOCK DRIVE
9702	12		2,348 S.F.	212 BULLOCK DRIVE
9702	13		1,926 S.F.	214 BULLOCK DRIVE
9702	14		1,926 S.F.	216 BULLOCK DRIVE
9702	15		2,348 S.F.	218 BULLOCK DRIVE
9702	16		2,348 S.F.	220 BULLOCK DRIVE
9702	17		1,926 S.F.	222 BULLOCK DRIVE
9702	18		1,926 S.F.	224 BULLOCK DRIVE
9702	19		2,348 S.F.	226 BULLOCK DRIVE
9702	20		2,348 S.F.	228 BULLOCK DRIVE
9702	21		1,926 S.F.	230 BULLOCK DRIVE
9702	22		1,926 S.F.	232 BULLOCK DRIVE
9702	23		2,348 S.F.	234 BULLOCK DRIVE

Block	Lot	Qualifier	Area	Address
9702	24		2,348 S.F.	236 BULLOCK DRIVE
9702	25		1,926 S.F.	238 BULLOCK DRIVE
9702	26		1,926 S.F.	240 BULLOCK DRIVE
9702	27		2,348 S.F.	242 BULLOCK DRIVE
9702	28		2,348 S.F.	10 WILKINSON WAY
9702	29		1,926 S.F.	12 WILKINSON WAY
9702	30		1,926 S.F.	14 WILKINSON WAY
9702	31		2,348 S.F.	16 WILKINSON WAY
9702	32		2,348 S.F.	18 WILKINSON WAY
9702	33		1,926 S.F.	20 WILKINSON WAY
9702	34		1,926 S.F.	22 WILKINSON WAY
9702	35		2,222 S.F.	24 WILKINSON WAY
9702	36		2,348 S.F.	26 WILKINSON WAY
9702	37		2,003 S.F.	28 WILKINSON WAY
9702	38		2,003 S.F.	30 WILKINSON WAY
9702	39		2,222 S.F.	32 WILKINSON WAY
9702	40		2,222 S.F.	34 WILKINSON WAY
9702	41		2,181 S.F.	36 WILKINSON WAY
9702	42		2,003 S.F.	38 WILKINSON WAY
9702	43		1,811 S.F.	40 WILKINSON WAY
9702	44		1,926 S.F.	42 WILKINSON WAY
9702	45		2,348 S.F.	44 WILKINSON WAY

REVISIONS		
DATE	L.S. NAME	NO.

This map has been redrawn using Computer Aided Drafting/Design (CAD/D) based on the map prepared by Matthew L. Martin, December, 1994.

THIS MAP SHEET HAS BEEN FORMALLY CERTIFIED FOR CONSOLIDATION ON 12/10/2012, ASSIGNED SERIAL NUMBER 1012, AND SIGNED BY SUE DAVIDSON (CTA SUPERVISING FIELD REPRESENTATIVE FOR THE STATE OF NEW JERSEY). A COPY OF THE ORIGINALLY APPROVED MAPS ARE ON FILE AT THE MUNICIPALITY OF PRINCETON LOCATED AT 400 WITHERSPOON STREET, PRINCETON, NJ. THE NEW JERSEY STATE DIVISION OF TAXATION IS RETAINING THE OFFICIAL APPROVED MAPS.

TAX MAP PRINCETON
 MERCER COUNTY, NEW JERSEY
 SCALE: 1" = 50' OCTOBER, 2012
 DAVID B. DIXON, PLS
 Professional Land Surveyor N.J. Lic. No.27282
 OMLAND ENGINEERING ASSOCIATES, INC.
 CEDAR KNOLLS, NEW JERSEY
 To Show Conditions as of October, 2012