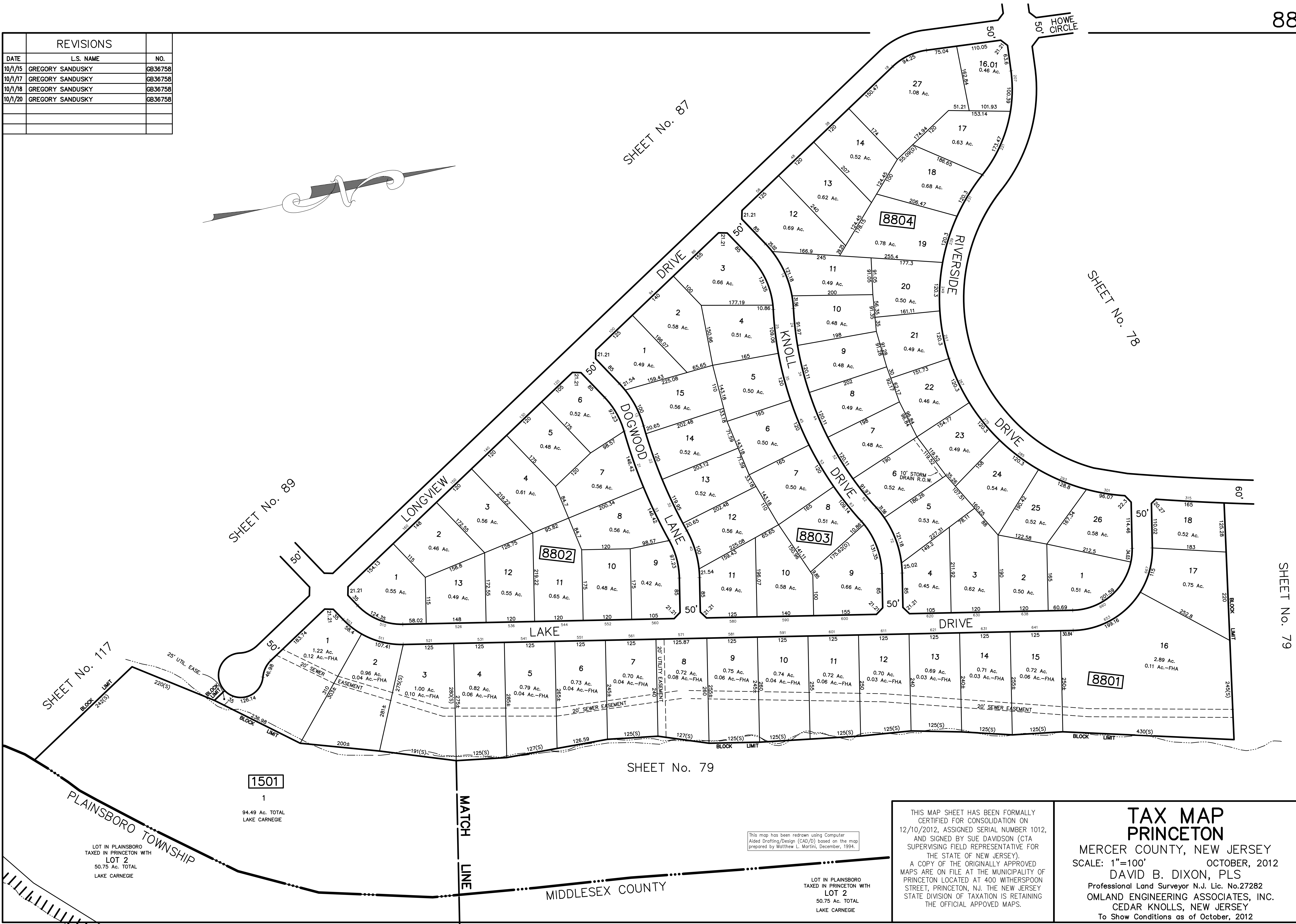
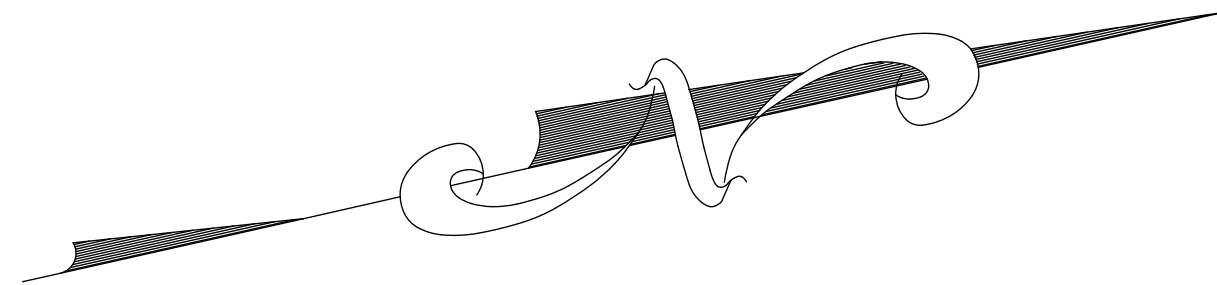


REVISIONS		
DATE	L.S. NAME	NO.
10/1/15	GREGORY SANDUSKY	GB36758
10/1/17	GREGORY SANDUSKY	GB36758
10/1/18	GREGORY SANDUSKY	GB36758
10/1/20	GREGORY SANDUSKY	GB36758



SHEET No. 79

LOT IN PLAINSBORO
TAXED IN PRINCETON WITH
LOT 2
50.75 Ac. TOTAL
LAKE CARNEGIE

1501
1
94.49 Ac. TOTAL
LAKE CARNEGIE

This map has been redrawn using Computer Aided Drafting/Design (CAD/D) based on the map prepared by Matthew L. Martini, December, 1994.

LOT IN PLAINSBORO
TAXED IN PRINCETON WITH
LOT 2
50.75 Ac. TOTAL
LAKE CARNEGIE

THIS MAP SHEET HAS BEEN FORMALLY CERTIFIED FOR CONSOLIDATION ON 12/10/2012, ASSIGNED SERIAL NUMBER 1012, AND SIGNED BY SUE DAVIDSON (CTA SUPERVISING FIELD REPRESENTATIVE FOR THE STATE OF NEW JERSEY). A COPY OF THE ORIGINALLY APPROVED MAPS ARE ON FILE AT THE MUNICIPALITY OF PRINCETON LOCATED AT 400 WITHERSPOON STREET, PRINCETON, NJ. THE NEW JERSEY STATE DIVISION OF TAXATION IS RETAINING THE OFFICIAL APPROVED MAPS.

TAX MAP PRINCETON
MERCER COUNTY, NEW JERSEY
SCALE: 1"=100' OCTOBER, 2012
DAVID B. DIXON, PLS
Professional Land Surveyor N.J. Lic. No.27282
OMLAND ENGINEERING ASSOCIATES, INC.
CEDAR KNOLLS, NEW JERSEY
To Show Conditions as of October, 2012