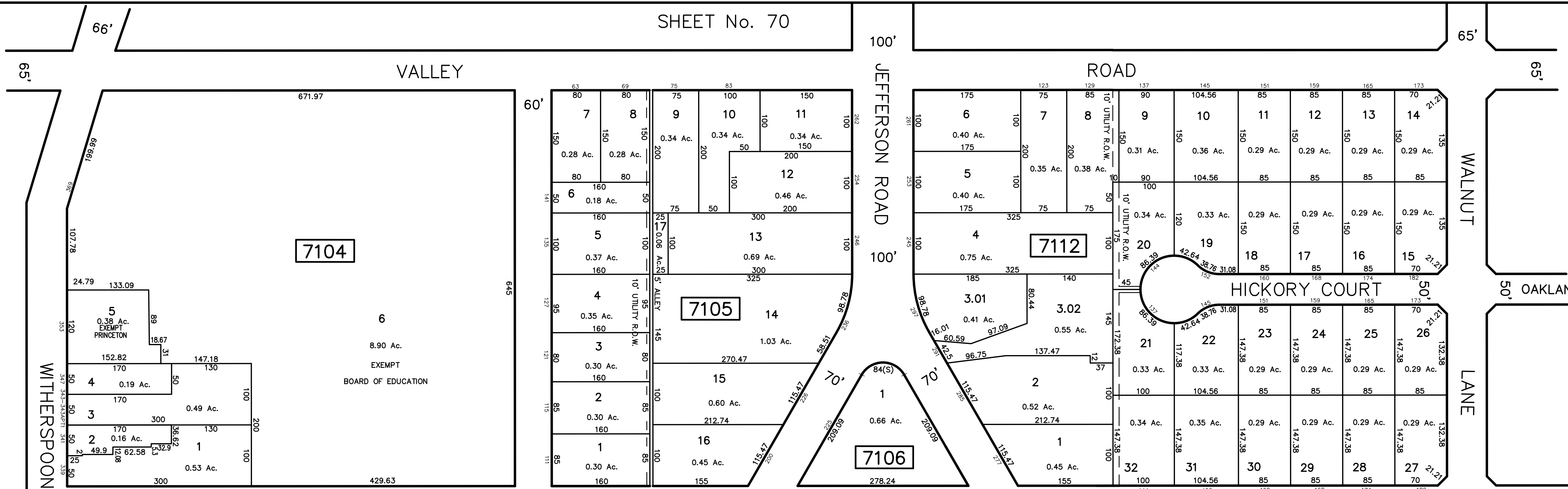
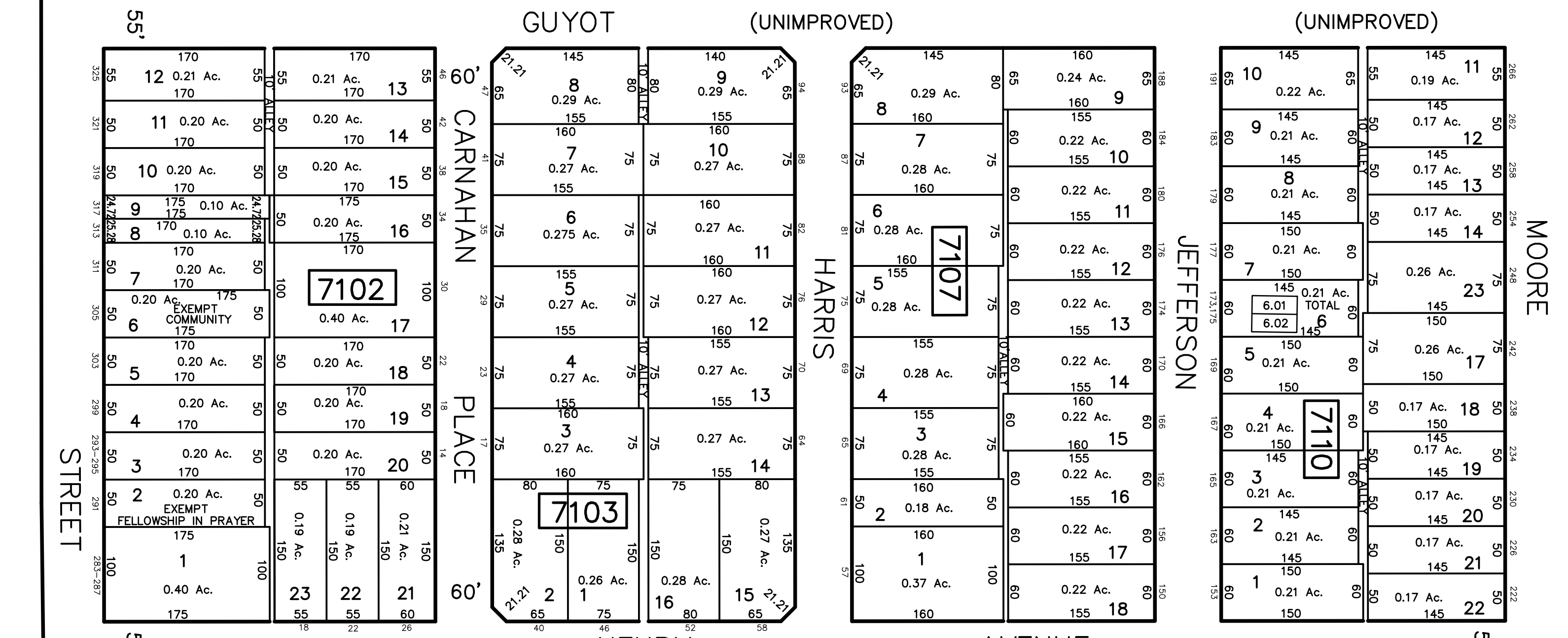


SHEET No. 70

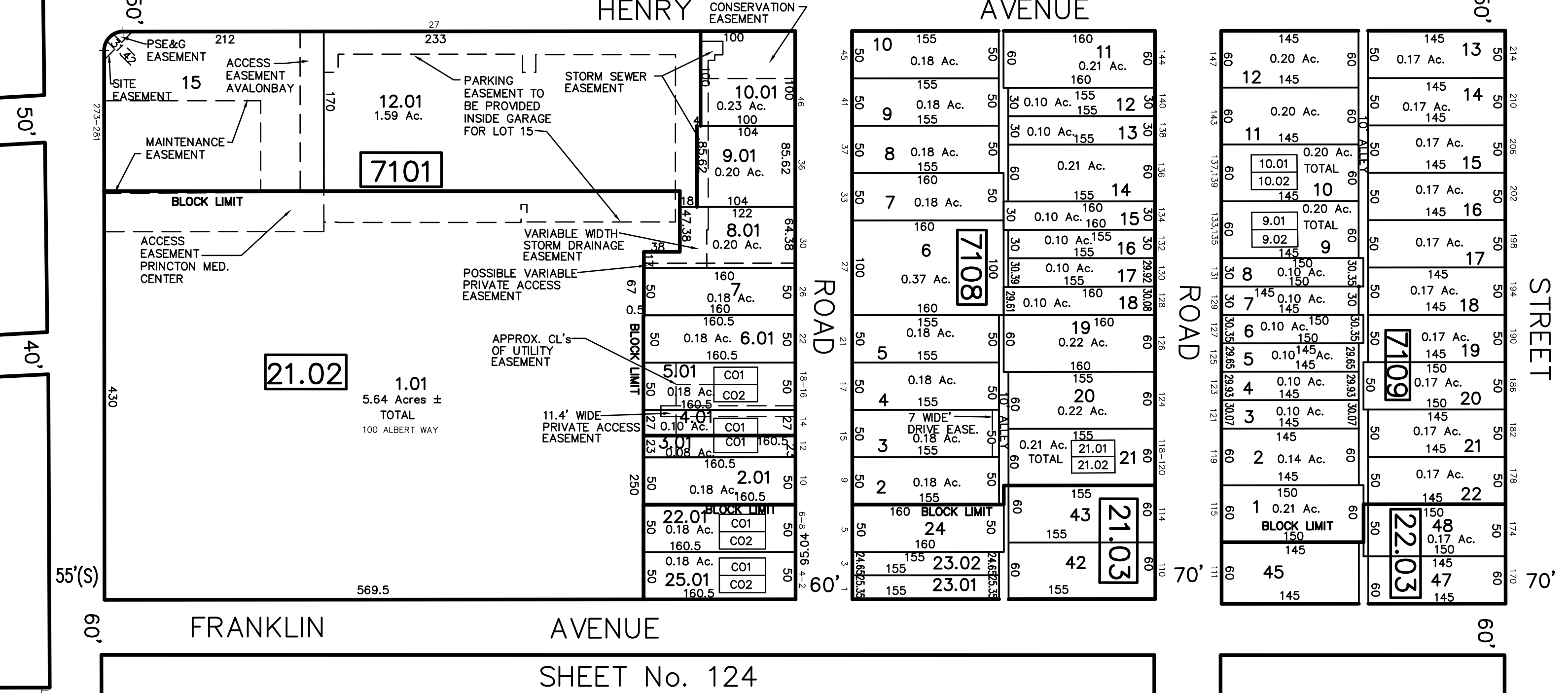


SHEET No. 69.02

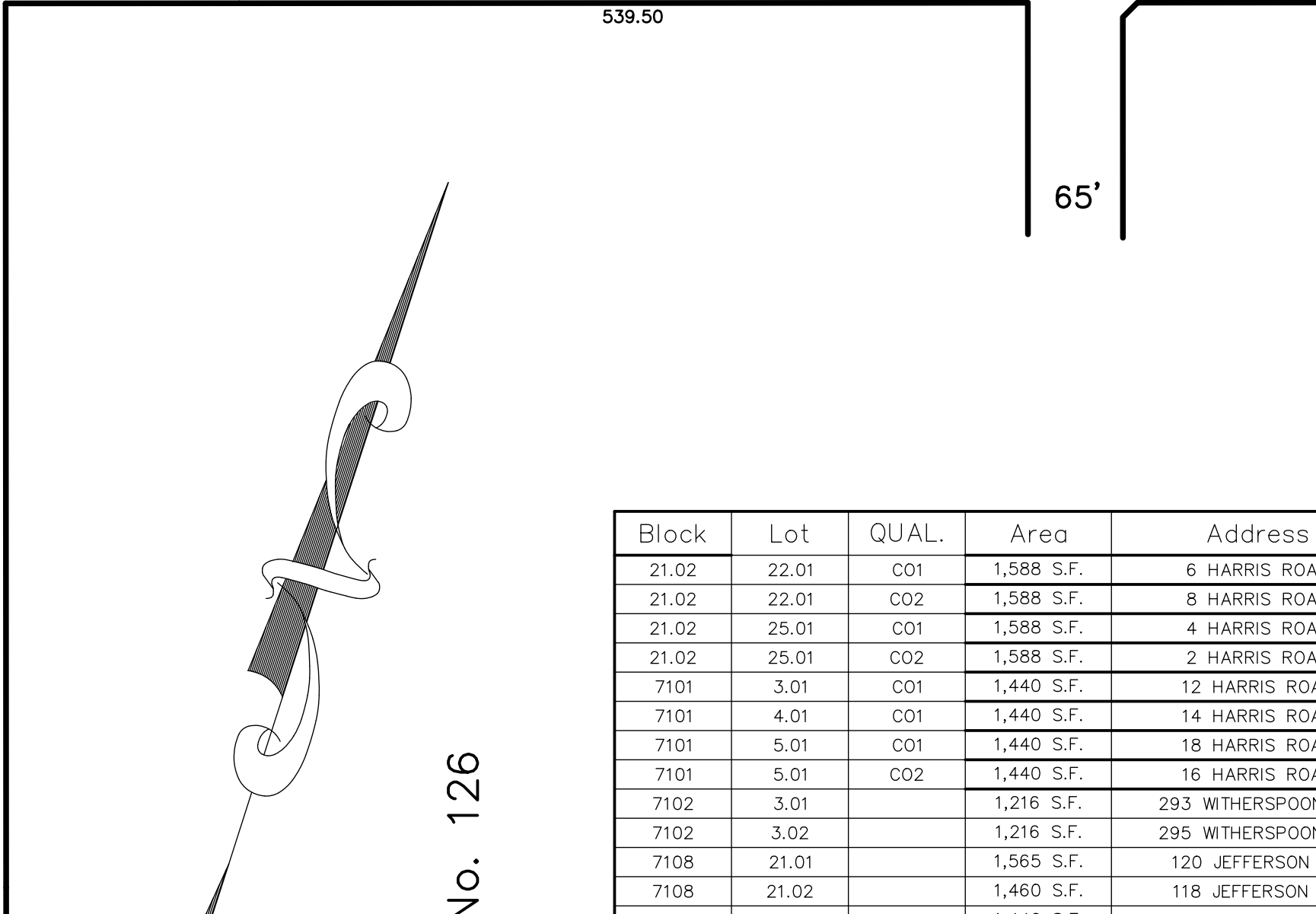


BIRCH AVE.

LEIGH AVE.



SHEET No. 124



SHEET No. 126

Block	Lot	QUAL.	Area	Address
21.02	22.01	C01	1,588 S.F.	6 HARRIS ROAD
21.02	22.01	CO2	1,588 S.F.	8 HARRIS ROAD
21.02	25.01	C01	1,588 S.F.	4 HARRIS ROAD
21.02	25.01	CO2	1,588 S.F.	2 HARRIS ROAD
7101	3.01	C01	1,440 S.F.	12 HARRIS ROAD
7101	4.01	C01	1,440 S.F.	14 HARRIS ROAD
7101	5.01	C01	1,440 S.F.	18 HARRIS ROAD
7101	5.01	CO2	1,440 S.F.	16 HARRIS ROAD
7102	3.01		1,216 S.F.	293 WITHERSPOON ST
7102	3.02		1,216 S.F.	295 WITHERSPOON ST
7108	21.01		1,565 S.F.	120 JEFFERSON RD
7108	21.02		1,460 S.F.	118 JEFFERSON RD
7109	9.01		1,440 S.F.	135 JEFFERSON RD UNIT 1
7109	9.02		1,440 S.F.	133 JEFFERSON RD UNIT 2
7109	10.01		1,440 S.F.	137 JEFFERSON RD
7109	10.02		1,440 S.F.	139 JEFFERSON RD
7110	6.01		1,500 S.F.	173 JEFFERSON RD
7110	6.02		1,500 S.F.	175 JEFFERSON RD

REVISIONS		
DATE	NAME	NO.
10/1/14	GREGORY SANDUSKY	GB36758
10/1/15	GREGORY SANDUSKY	GB36758
10/31/16	GREGORY SANDUSKY	GB36758
10/1/17	GREGORY SANDUSKY	GB36758
10/1/18	GREGORY SANDUSKY	GB36758
10/1/19	GREGORY SANDUSKY	GB36758
10/1/20	GREGORY SANDUSKY	GB36758
10/1/21	GREGORY SANDUSKY	GB36758

THIS MAP SHEET HAS BEEN FORMALLY CERTIFIED FOR CONSOLIDATION ON 12/10/2012, ASSIGNED SERIAL NUMBER 1012, AND SIGNED BY SUE DAVIDSON (CTA SUPERVISING FIELD REPRESENTATIVE FOR THE STATE OF NEW JERSEY). A COPY OF THE ORIGINALLY APPROVED MAPS ARE ON FILE AT THE MUNICIPALITY OF PRINCETON LOCATED AT 400 WITHERSPOON STREET, PRINCETON, NJ. THE NEW JERSEY STATE DIVISION OF TAXATION IS RETAINING THE OFFICIAL APPROVED MAPS.

TAX MAP PRINCETON
 MERCER COUNTY, NEW JERSEY
 SCALE: 1" = 100' OCTOBER, 2012
 DAVID B. DIXON, PLS
 Professional Land Surveyor N.J. Lic. No.27282
 OMLAND ENGINEERING ASSOCIATES, INC.
 CEDAR KNOLLS, NEW JERSEY
 To Show Conditions as of October, 2012