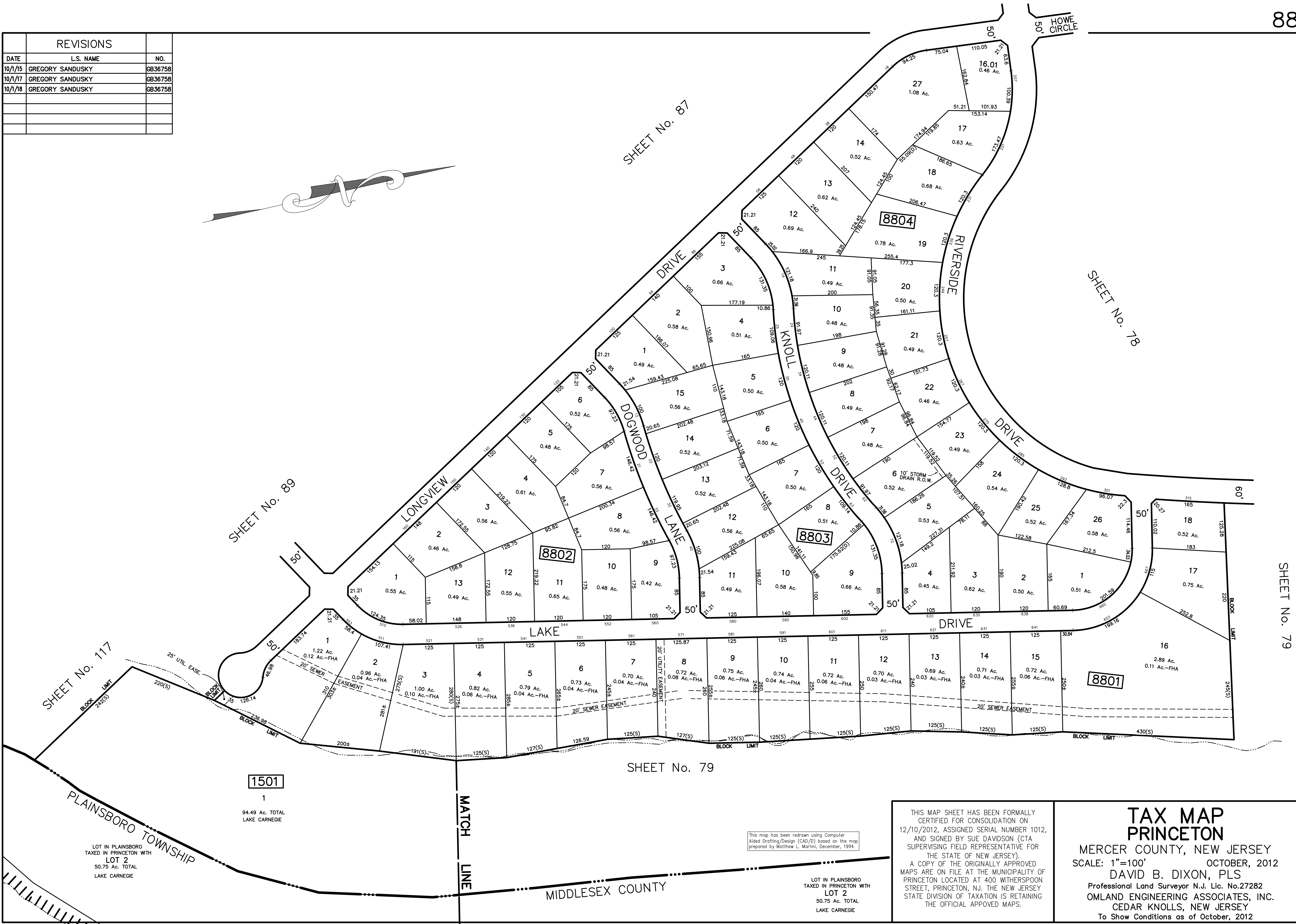
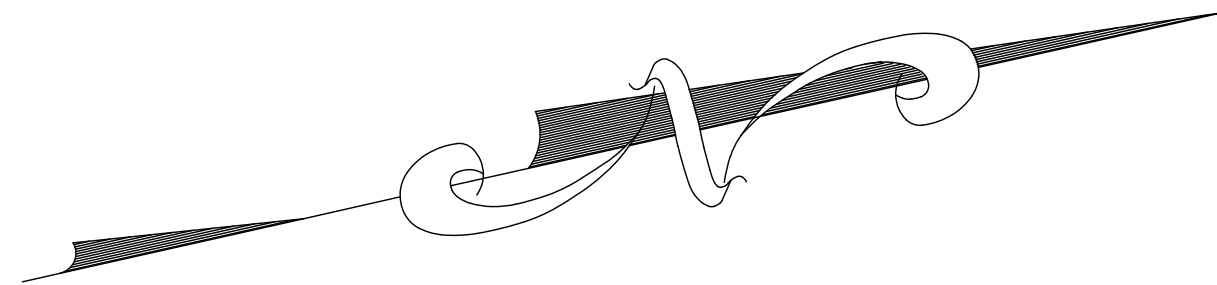


REVISIONS		
DATE	L.S. NAME	NO.
10/1/15	GREGORY SANDUSKY	GB36758
10/1/17	GREGORY SANDUSKY	GB36758
10/1/18	GREGORY SANDUSKY	GB36758



SHEET No. 117

SHEET No. 89

SHEET No. 87

SHEET No. 78

SHEET No. 79

LOT IN PLAINSBORO
TAXED IN PRINCETON WITH
LOT 2
50.75 Ac. TOTAL
LAKE CARNEGIE

1501
1
94.49 Ac. TOTAL
LAKE CARNEGIE

MATCH LINE

MIDDLESEX COUNTY

LOT IN PLAINSBORO
TAXED IN PRINCETON WITH
LOT 2
50.75 Ac. TOTAL
LAKE CARNEGIE

This map has been redrawn using Computer
Aided Drafting/Design (CAD/D) based on the map
prepared by Matthew L. Martini, December, 1994.

THIS MAP SHEET HAS BEEN FORMALLY
CERTIFIED FOR CONSOLIDATION ON
12/10/2012, ASSIGNED SERIAL NUMBER 1012,
AND SIGNED BY SUE DAVIDSON (CTA
SUPERVISING FIELD REPRESENTATIVE FOR
THE STATE OF NEW JERSEY).
A COPY OF THE ORIGINALLY APPROVED
MAPS ARE ON FILE AT THE MUNICIPALITY OF
PRINCETON LOCATED AT 400 WITHERSPOON
STREET, PRINCETON, NJ. THE NEW JERSEY
STATE DIVISION OF TAXATION IS RETAINING
THE OFFICIAL APPROVED MAPS.

**TAX MAP
PRINCETON**
MERCER COUNTY, NEW JERSEY
SCALE: 1"=100' OCTOBER, 2012
DAVID B. DIXON, PLS
Professional Land Surveyor N.J. Lic. No.27282
OMLAND ENGINEERING ASSOCIATES, INC.
CEDAR KNOLLS, NEW JERSEY
To Show Conditions as of October, 2012