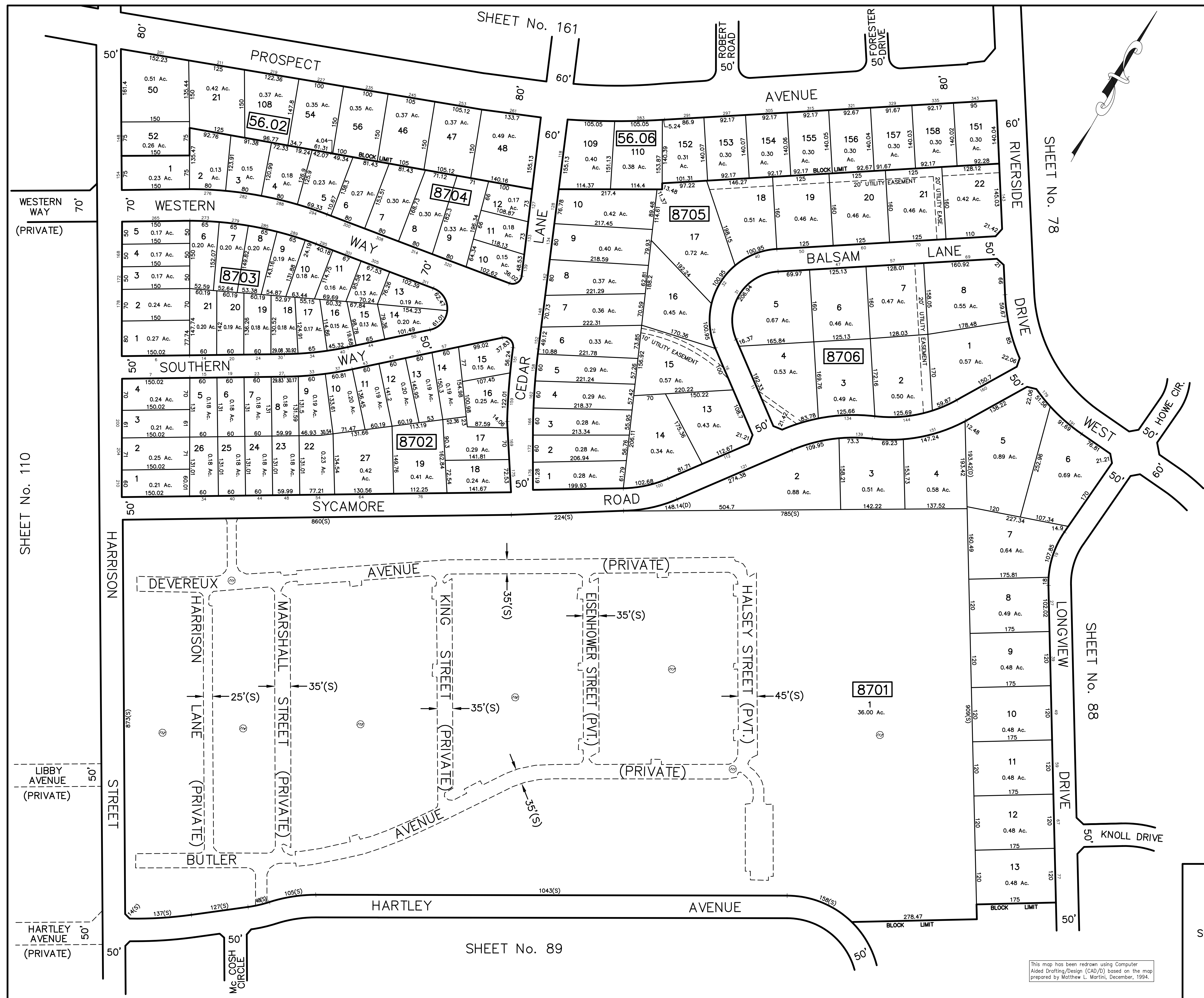


REVISIONS		
DATE	L.S. NAME	NO.
10/1/14	GREGORY SANDUSKY	36758
10/1/15	GREGORY SANDUSKY	36758
10/31/16	GREGORY SANDUSKY	GB36758
10/1/19	GREGORY SANDUSKY	GB36758

Princeton University Butler Tract Block 8701, Lot 1		
Qualifier	Building Association	Acres
C111	BUTLER TRACT ROADS	4.30 Ac.
C112	VACANT LOT	3.75 Ac.
C113	VACANT LOT	17.09 Ac.
C114	VACANT LOT	1.86 Ac.
C115	VACANT LOT	4.20 Ac.
C116	VACANT LOT	2.39 Ac.
C117	VACANT LOT	2.99 Ac.

QUALIFIER LEGEND
 (22) DENOTES QUALIFIER NUMBER



THIS MAP SHEET HAS BEEN FORMALLY CERTIFIED FOR CONSOLIDATION ON 12/10/2012, ASSIGNED SERIAL NUMBER 1012, AND SIGNED BY SUE DAVIDSON (CTA SUPERVISING FIELD REPRESENTATIVE FOR THE STATE OF NEW JERSEY). A COPY OF THE ORIGINALLY APPROVED MAPS ARE ON FILE AT THE MUNICIPALITY OF PRINCETON LOCATED AT 400 WITHERSPOON STREET, PRINCETON, NJ. THE NEW JERSEY STATE DIVISION OF TAXATION IS RETAINING THE OFFICIAL APPROVED MAPS.

TAX MAP
PRINCETON
 MERCER COUNTY, NEW JERSEY
 SCALE: 1" = 100' OCTOBER, 2012
 DAVID B. DIXON, PLS
 Professional Land Surveyor N.J. Lic. No.27282
 OMLAND ENGINEERING ASSOCIATES, INC.
 CEDAR KNOLLS, NEW JERSEY
 To Show Conditions as of October, 2012

This map has been redrawn using Computer Aided Drafting/Design (CAD/D) based on the map prepared by Matthew L. Martini, December, 1994.