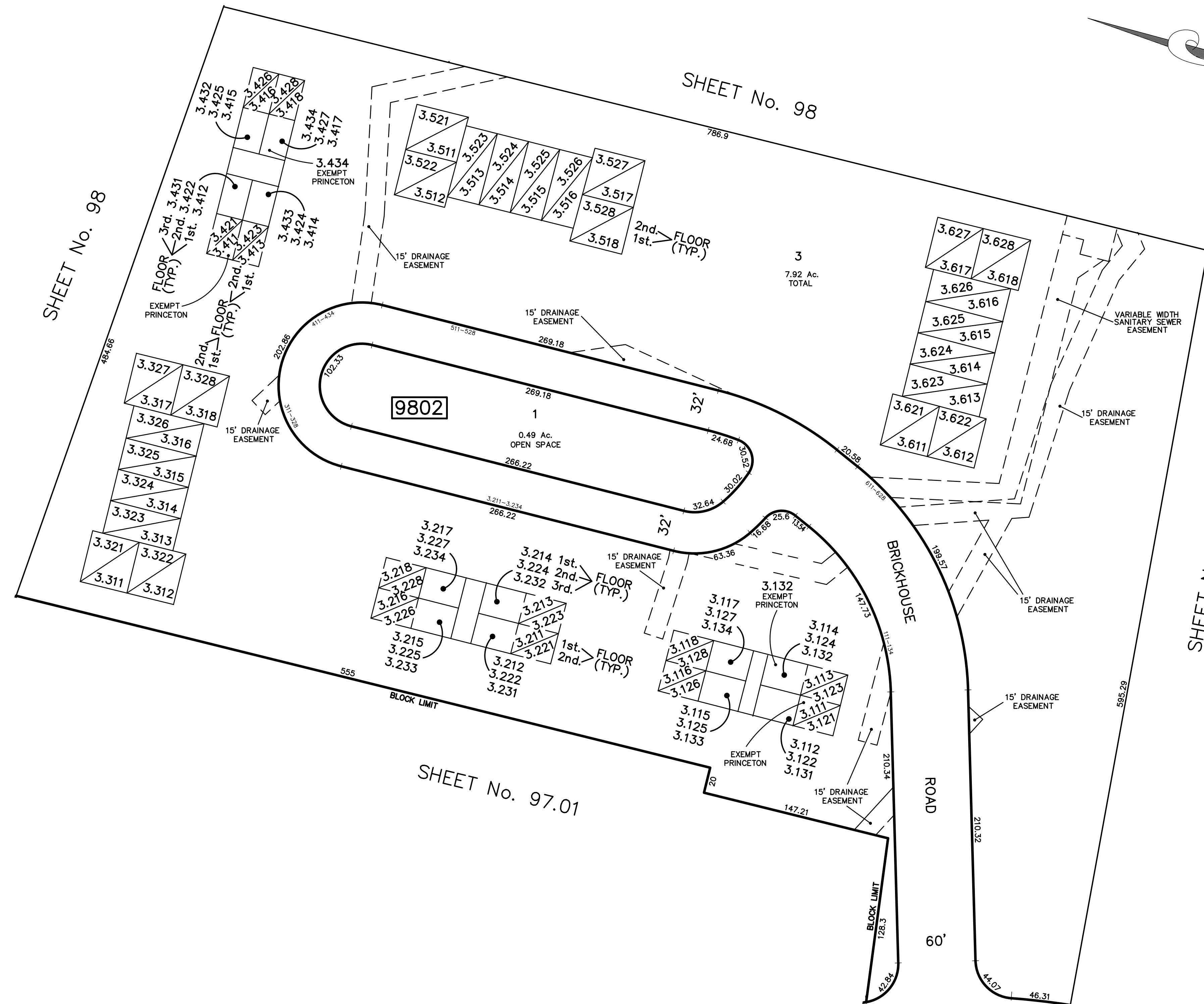


REVISIONS		
DATE	L.S. NAME	NO.
10/1/15	GREGORY SANDUSKY	GB36758

Block	Lot	Qualifier	Level	Area	Address
9801	3.111		LEVEL 1	674 S.F.	111 BRICKHOUSE ROAD
9801	3.112		LEVEL 1	672 S.F.	112 BRICKHOUSE ROAD
9801	3.113		LEVEL 1	674 S.F.	113 BRICKHOUSE ROAD
9801	3.114		LEVEL 1	672 S.F.	114 BRICKHOUSE ROAD
9801	3.115		LEVEL 1	588 S.F.	115 BRICKHOUSE ROAD
9801	3.116		LEVEL 1	674 S.F.	116 BRICKHOUSE ROAD
9801	3.117		LEVEL 1	588 S.F.	117 BRICKHOUSE ROAD
9801	3.118		LEVEL 1	674 S.F.	118 BRICKHOUSE ROAD
9801	3.121		LEVEL 2	674 S.F.	121 BRICKHOUSE ROAD
9801	3.122		LEVEL 2	672 S.F.	122 BRICKHOUSE ROAD
9801	3.123		LEVEL 2	1,067 S.F.	123 BRICKHOUSE ROAD
9801	3.124		LEVEL 2	672 S.F.	124 BRICKHOUSE ROAD
9801	3.125		LEVEL 2	588 S.F.	125 BRICKHOUSE ROAD
9801	3.126		LEVEL 2	674 S.F.	126 BRICKHOUSE ROAD
9801	3.127		LEVEL 2	588 S.F.	127 BRICKHOUSE ROAD
9801	3.128		LEVEL 2	1,067 S.F.	128 BRICKHOUSE ROAD
9801	3.131		LEVEL 3	672 S.F.	131 BRICKHOUSE ROAD
9801	3.132		LEVEL 3	588 S.F.	132 BRICKHOUSE ROAD
9801	3.133		LEVEL 3	588 S.F.	133 BRICKHOUSE ROAD
9801	3.134		LEVEL 3	588 S.F.	134 BRICKHOUSE ROAD
9801	3.211		LEVEL 1	674 S.F.	211 BRICKHOUSE ROAD
9801	3.212		LEVEL 1	672 S.F.	212 BRICKHOUSE ROAD
9801	3.213		LEVEL 1	674 S.F.	213 BRICKHOUSE ROAD
9801	3.214		LEVEL 1	672 S.F.	214 BRICKHOUSE ROAD
9801	3.215		LEVEL 1	672 S.F.	215 BRICKHOUSE ROAD
9801	3.216		LEVEL 1	674 S.F.	216 BRICKHOUSE ROAD
9801	3.217		LEVEL 1	672 S.F.	217 BRICKHOUSE ROAD
9801	3.218		LEVEL 1	674 S.F.	218 BRICKHOUSE ROAD
9801	3.221		LEVEL 2	674 S.F.	221 BRICKHOUSE ROAD
9801	3.222		LEVEL 2	672 S.F.	222 BRICKHOUSE ROAD
9801	3.223		LEVEL 2	674 S.F.	223 BRICKHOUSE ROAD
9801	3.224		LEVEL 2	672 S.F.	224 BRICKHOUSE ROAD
9801	3.225		LEVEL 2	672 S.F.	225 BRICKHOUSE ROAD
9801	3.226		LEVEL 2	674 S.F.	226 BRICKHOUSE ROAD
9801	3.227		LEVEL 2	672 S.F.	227 BRICKHOUSE ROAD
9801	3.228		LEVEL 2	674 S.F.	228 BRICKHOUSE ROAD
9801	3.231		LEVEL 3	672 S.F.	231 BRICKHOUSE ROAD
9801	3.232		LEVEL 3	672 S.F.	232 BRICKHOUSE ROAD
9801	3.233		LEVEL 3	672 S.F.	233 BRICKHOUSE ROAD
9801	3.234		LEVEL 3	672 S.F.	234 BRICKHOUSE ROAD
9801	3.311		LEVEL 1	1,296 S.F.	311 BRICKHOUSE ROAD
9801	3.312		LEVEL 1	1,296 S.F.	312 BRICKHOUSE ROAD
9801	3.313		LEVEL 1	1,352 S.F.	313 BRICKHOUSE ROAD
9801	3.314		LEVEL 1	1,352 S.F.	314 BRICKHOUSE ROAD
9801	3.315		LEVEL 1	1,352 S.F.	315 BRICKHOUSE ROAD
9801	3.316		LEVEL 1	1,352 S.F.	316 BRICKHOUSE ROAD
9801	3.317		LEVEL 1	1,296 S.F.	317 BRICKHOUSE ROAD
9801	3.318		LEVEL 1	1,296 S.F.	318 BRICKHOUSE ROAD
9801	3.321		LEVEL 2	1,644 S.F.	321 BRICKHOUSE ROAD
9801	3.322		LEVEL 2	1,644 S.F.	322 BRICKHOUSE ROAD
9801	3.323		LEVEL 2	1,827 S.F.	323 BRICKHOUSE ROAD
9801	3.324		LEVEL 2	1,827 S.F.	324 BRICKHOUSE ROAD
9801	3.325		LEVEL 2	1,827 S.F.	325 BRICKHOUSE ROAD
9801	3.326		LEVEL 2	1,827 S.F.	326 BRICKHOUSE ROAD
9801	3.327		LEVEL 2	1,644 S.F.	327 BRICKHOUSE ROAD
9801	3.328		LEVEL 2	1,644 S.F.	328 BRICKHOUSE ROAD
9801	3.411		LEVEL 1	885 S.F.	411 BRICKHOUSE ROAD
9801	3.412		LEVEL 1	588 S.F.	412 BRICKHOUSE ROAD
9801	3.413		LEVEL 1	885 S.F.	413 BRICKHOUSE ROAD
9801	3.414		LEVEL 1	588 S.F.	414 BRICKHOUSE ROAD
9801	3.415		LEVEL 1	420 S.F.	415 BRICKHOUSE ROAD
9801	3.416		LEVEL 1	885 S.F.	416 BRICKHOUSE ROAD
9801	3.417		LEVEL 1	420 S.F.	417 BRICKHOUSE ROAD
9801	3.418		LEVEL 1	885 S.F.	418 BRICKHOUSE ROAD
9801	3.421		LEVEL 2	885 S.F.	421 BRICKHOUSE ROAD
9801	3.422		LEVEL 2	588 S.F.	422 BRICKHOUSE ROAD
9801	3.423		LEVEL 2	885 S.F.	423 BRICKHOUSE ROAD
9801	3.424		LEVEL 2	588 S.F.	424 BRICKHOUSE ROAD
9801	3.425		LEVEL 2	420 S.F.	425 BRICKHOUSE ROAD
9801	3.426		LEVEL 2	885 S.F.	426 BRICKHOUSE ROAD
9801	3.427		LEVEL 2	420 S.F.	427 BRICKHOUSE ROAD
9801	3.428		LEVEL 2	885 S.F.	428 BRICKHOUSE ROAD
9801	3.431		LEVEL 3	588 S.F.	431 BRICKHOUSE ROAD
9801	3.432		LEVEL 3	588 S.F.	432 BRICKHOUSE ROAD
9801	3.433		LEVEL 3	420 S.F.	433 BRICKHOUSE ROAD
9801	3.434		LEVEL 3	420 S.F.	434 BRICKHOUSE ROAD
9801	3.511		LEVEL 1	1,296 S.F.	511 BRICKHOUSE ROAD
9801	3.512		LEVEL 1	1,296 S.F.	512 BRICKHOUSE ROAD
9801	3.513		LEVEL 1	1,352 S.F.	513 BRICKHOUSE ROAD
9801	3.514		LEVEL 1	1,352 S.F.	514 BRICKHOUSE ROAD
9801	3.515		LEVEL 1	1,352 S.F.	515 BRICKHOUSE ROAD
9801	3.516		LEVEL 1	1,352 S.F.	516 BRICKHOUSE ROAD
9801	3.517		LEVEL 1	1,296 S.F.	517 BRICKHOUSE ROAD
9801	3.518		LEVEL 1	1,296 S.F.	518 BRICKHOUSE ROAD
9801	3.521		LEVEL 2	1,644 S.F.	521 BRICKHOUSE ROAD
9801	3.522		LEVEL 2	1,644 S.F.	522 BRICKHOUSE ROAD
9801	3.523		LEVEL 2	1,827 S.F.	523 BRICKHOUSE ROAD
9801	3.524		LEVEL 2	1,827 S.F.	524 BRICKHOUSE ROAD
9801	3.525		LEVEL 2	1,827 S.F.	525 BRICKHOUSE ROAD
9801	3.526		LEVEL 2	1,827 S.F.	526 BRICKHOUSE ROAD
9801	3.527		LEVEL 2	1,644 S.F.	527 BRICKHOUSE ROAD
9801	3.528		LEVEL 2	1,644 S.F.	528 BRICKHOUSE ROAD
9801	3.611		LEVEL 1	1,296 S.F.	611 BRICKHOUSE ROAD
9801	3.612		LEVEL 1	1,296 S.F.	612 BRICKHOUSE ROAD
9801	3.613		LEVEL 1	1,352 S.F.	613 BRICKHOUSE ROAD
9801	3.614		LEVEL 1	1,352 S.F.	614 BRICKHOUSE ROAD
9801	3.615		LEVEL 1	1,352 S.F.	615 BRICKHOUSE ROAD
9801	3.616		LEVEL 1	1,352 S.F.	616 BRICKHOUSE ROAD
9801	3.617		LEVEL 1	1,296 S.F.	617 BRICKHOUSE ROAD
9801	3.618		LEVEL 1	1,296 S.F.	618 BRICKHOUSE ROAD
9801	3.621		LEVEL 2	1,644 S.F.	621 BRICKHOUSE ROAD
9801	3.622		LEVEL 2	1,644 S.F.	622 BRICKHOUSE ROAD
9801	3.623		LEVEL 2	1,827 S.F.	623 BRICKHOUSE ROAD
9801	3.624		LEVEL 2	1,827 S.F.	624 BRICKHOUSE ROAD
9801	3.625		LEVEL 2	1,827 S.F.	625 BRICKHOUSE ROAD
9801	3.626		LEVEL 2	1,827 S.F.	626 BRICKHOUSE ROAD
9801	3.627		LEVEL 2	1,644 S.F.	627 BRICKHOUSE ROAD
9801	3.628		LEVEL 2	1,644 S.F.	628 BRICKHOUSE ROAD



This map has been redrawn using Computer Aided Drafting/Design (CAD/D) based on the map prepared by Matthew L. Martini, December, 1994.

THIS MAP SHEET HAS BEEN FORMALLY CERTIFIED FOR CONSOLIDATION ON 12/10/2012, ASSIGNED SERIAL NUMBER 1012, AND SIGNED BY SUE DAVIDSON (CTA SUPERVISING FIELD REPRESENTATIVE FOR THE STATE OF NEW JERSEY). A COPY OF THE ORIGINALLY APPROVED MAPS ARE ON FILE AT THE MUNICIPALITY OF PRINCETON LOCATED AT 400 WITHERSPOON STREET, PRINCETON, NJ. THE NEW JERSEY STATE DIVISION OF TAXATION IS RETAINING THE OFFICIAL APPROVED MAPS.

**TAX MAP PRINCETON**  
 MERCER COUNTY, NEW JERSEY  
 SCALE: 1" = 50'      OCTOBER, 2012  
 DAVID B. DIXON, PLS  
 Professional Land Surveyor N.J. Lic. No.27282  
 OMLAND ENGINEERING ASSOCIATES, INC.  
 CEDAR KNOLLS, NEW JERSEY  
 To Show Conditions as of October, 2012