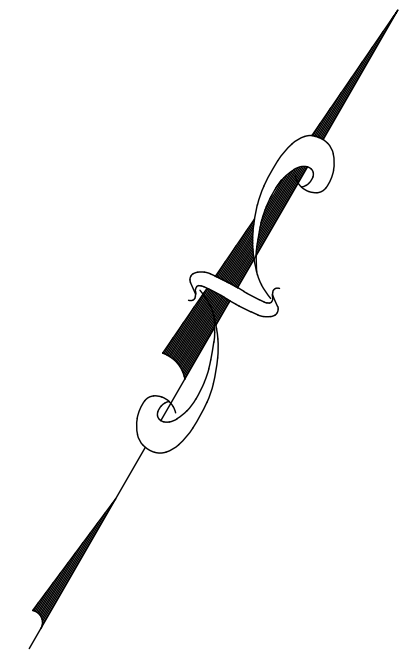
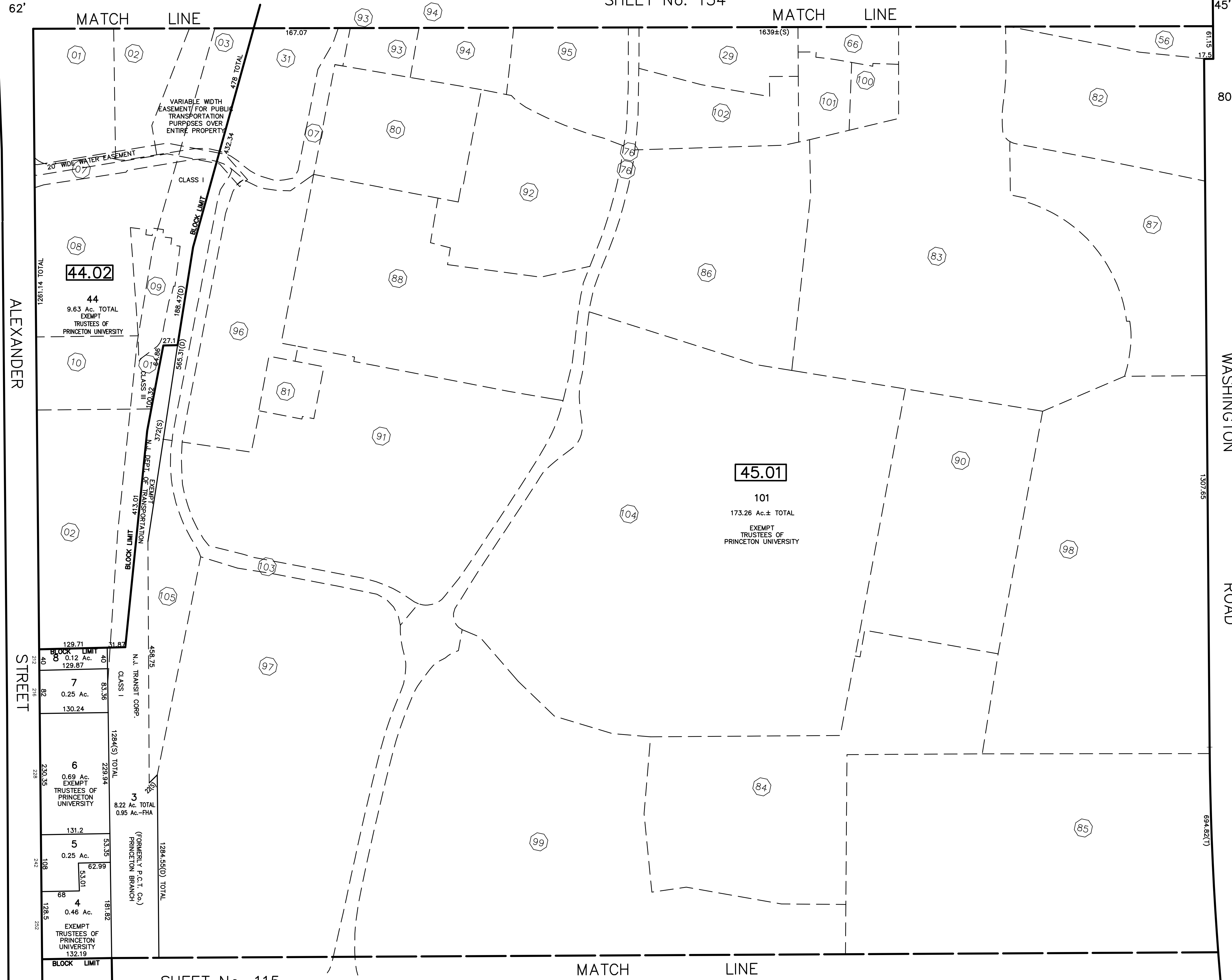


REVISIONS		
DATE	NAME	NO.
10/1/14	GREGORY SANDUSKY	GB36758
10/1/17	GREGORY SANDUSKY	GB36758
10/1/18	GREGORY SANDUSKY	GB36758

SHEET No. 153

SHEET No. 154



SHEET No. 109

Princeton Qualifiers				
Trustees of Princeton University				
BLOCK	LOT	Qualifier	Building Association	Acreage
45.01	101	D02	ELM DRIVE	1.25 Ac.
		D03	BAKER RINK	1.39 Ac.
		D05	ELM DRIVE SUB-STATION	0.25 Ac.
		D06	THOMAS LABORATORY	2.25 Ac.
		D07	SCULLY HALL	7.50 Ac.
		D08	LENZ TENNIS CENTER	8.18 Ac.
		D09	1952 STADIUM/BEDFORD FLD	9.01 Ac.
		D11	BLOOMBERG HALL	5.83 Ac.
		D12	CARL ICHAN LAB	2.07 Ac.
		D13	MACMILLAN BLD & ANNEX	3.51 Ac.
		D15	ROBERTS STADIUM	6.21 Ac.
		D16	CHILL PLNT-COGEN-COOL TOWER	4.85 Ac.
		D17	200 ELM DRIVE	1.92 Ac.
		D18	WHITMAN/BAKER HALL S	0.25 Ac.
		D19	WHITMAN/BAKER HALL E	0.46 Ac.
		D20	WHITMAN/PO 1981 HALL	0.94 Ac.
		D21	WEST GARAGE & LOT 6	3.19 Ac.
		D22	PARKING LOT #23	8.07 Ac.
		D23	NUERO SCIENCE BUILDING	5.42 Ac.
		D24	LANDSCAPE MAINTAIN YARD	10.18 Ac.
		D25	BUTLER - 1976 HALL	0.28 Ac.
		D26	BUTLER - WILF HALL	0.24 Ac.
		D27	BUTLER - BOGLE HALL	0.34 Ac.
		D28	BUTLER - 1967 HALL	0.86 Ac.
		D29	BUTLER - YOSELOFF HALL	0.73 Ac.
		D30	PYNE DR SOUTH ACES RD	0.59 Ac.

Princeton Qualifiers				
Trustees of Princeton University				
BLOCK	LOT	Qualifier	Building Association	Acreage
44.02	44	D01	ARTS & TRANSIT	6.01 Ac.
		D02	ARTS & TRANSIT CONSTRUCT	1.34 Ac.
		D03	ARTS & TRANSIT	1.34 Ac.

QUALIFIER LEGEND  
 (01) DENOTES QUALIFIER NUMBER

This map has been redrawn using Computer Aided Drafting/Design (CAD/D) based on the map prepared by Matthew L. Martini, December, 1994.

THIS MAP SHEET HAS BEEN FORMALLY CERTIFIED FOR CONSOLIDATION ON 12/10/2012, ASSIGNED SERIAL NUMBER 1012, AND SIGNED BY SUE DAVIDSON (CTA SUPERVISING FIELD REPRESENTATIVE FOR THE STATE OF NEW JERSEY). A COPY OF THE ORIGINALLY APPROVED MAPS ARE ON FILE AT THE MUNICIPALITY OF PRINCETON LOCATED AT 400 WITHERSPOON STREET, PRINCETON, NJ. THE NEW JERSEY STATE DIVISION OF TAXATION IS RETAINING THE OFFICIAL APPROVED MAPS.

**TAX MAP PRINCETON**  
 MERCER COUNTY, NEW JERSEY  
 SCALE: 1" = 100'      OCTOBER, 2012  
 DAVID B. DIXON, PLS  
 Professional Land Surveyor N.J. Lic. No.27282  
 OMLAND ENGINEERING ASSOCIATES, INC.  
 CEDAR KNOLLS, NEW JERSEY  
 To Show Conditions as of October, 2012