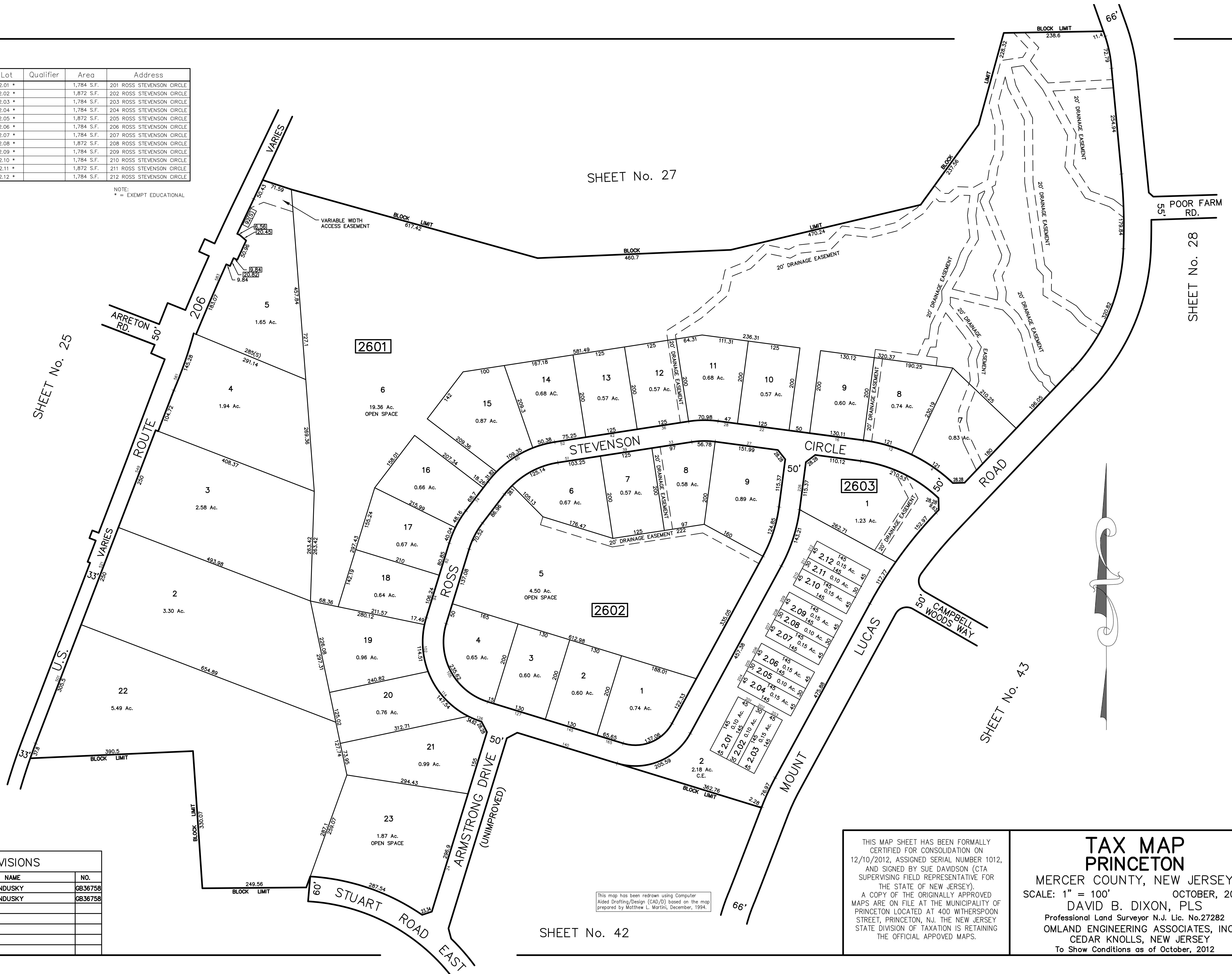


Block	Lot	Qualifier	Area	Address
2603	2.01 *		1,784 S.F.	201 ROSS STEVENSON CIRCLE
2603	2.02 *		1,872 S.F.	202 ROSS STEVENSON CIRCLE
2603	2.03 *		1,784 S.F.	203 ROSS STEVENSON CIRCLE
2603	2.04 *		1,784 S.F.	204 ROSS STEVENSON CIRCLE
2603	2.05 *		1,872 S.F.	205 ROSS STEVENSON CIRCLE
2603	2.06 *		1,784 S.F.	206 ROSS STEVENSON CIRCLE
2603	2.07 *		1,784 S.F.	207 ROSS STEVENSON CIRCLE
2603	2.08 *		1,872 S.F.	208 ROSS STEVENSON CIRCLE
2603	2.09 *		1,784 S.F.	209 ROSS STEVENSON CIRCLE
2603	2.10 *		1,784 S.F.	210 ROSS STEVENSON CIRCLE
2603	2.11 *		1,872 S.F.	211 ROSS STEVENSON CIRCLE
2603	2.12 *		1,784 S.F.	212 ROSS STEVENSON CIRCLE

NOTE:
* = EXEMPT EDUCATIONAL

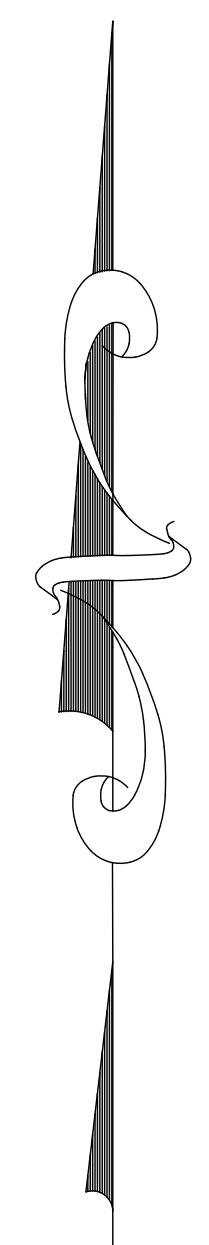
SHEET No. 27



SHEET No. 25

SHEET No. 28

SHEET No. 43



REVISIONS		
DATE	NAME	NO.
10/1/14	GREGORY SANDUSKY	GB36758
10/1/19	GREGORY SANDUSKY	GB36758

This map has been redrawn using Computer Aided Drafting/Design (CAD/D) based on the map prepared by Matthew L. Martini, December, 1994.

SHEET No. 42

THIS MAP SHEET HAS BEEN FORMALLY CERTIFIED FOR CONSOLIDATION ON 12/10/2012, ASSIGNED SERIAL NUMBER 1012, AND SIGNED BY SUE DAVIDSON (CTA SUPERVISING FIELD REPRESENTATIVE FOR THE STATE OF NEW JERSEY). A COPY OF THE ORIGINALLY APPROVED MAPS ARE ON FILE AT THE MUNICIPALITY OF PRINCETON LOCATED AT 400 WITHERSPOON STREET, PRINCETON, NJ. THE NEW JERSEY STATE DIVISION OF TAXATION IS RETAINING THE OFFICIAL APPROVED MAPS.

TAX MAP
PRINCETON
MERCER COUNTY, NEW JERSEY
SCALE: 1" = 100' OCTOBER, 2012
DAVID B. DIXON, PLS
Professional Land Surveyor N.J. Lic. No.27282
OMLAND ENGINEERING ASSOCIATES, INC.
CEDAR KNOLLS, NEW JERSEY
To Show Conditions as of October, 2012