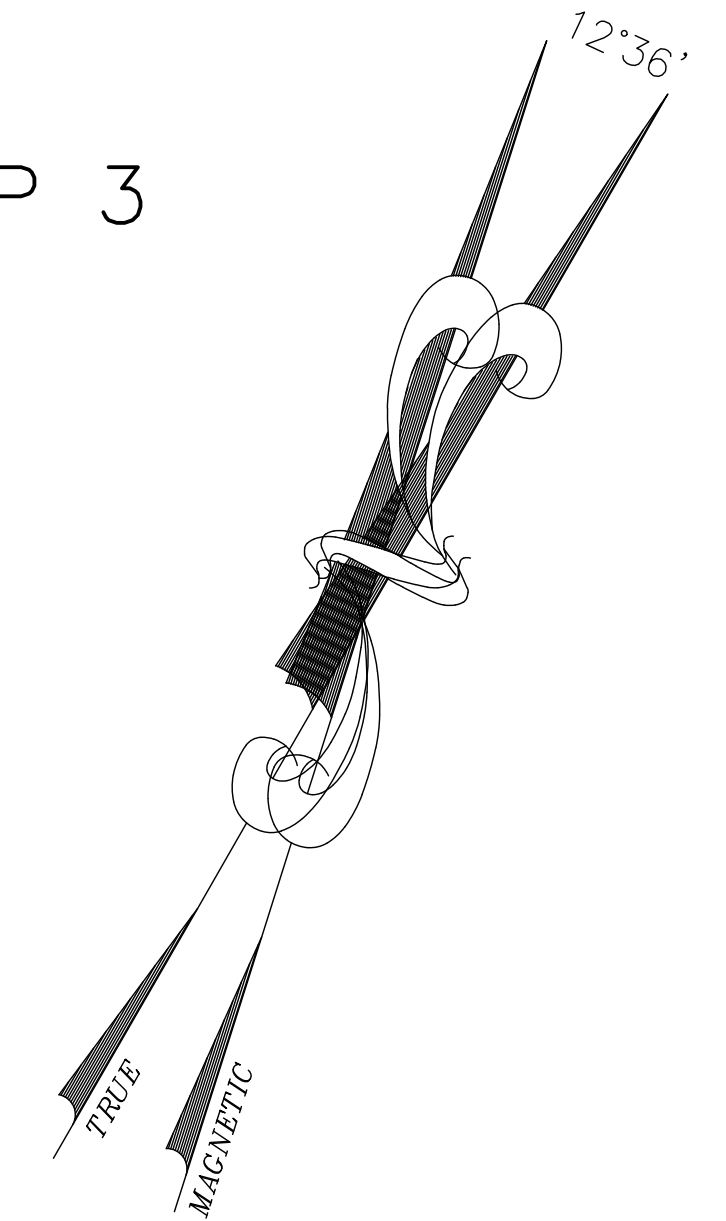
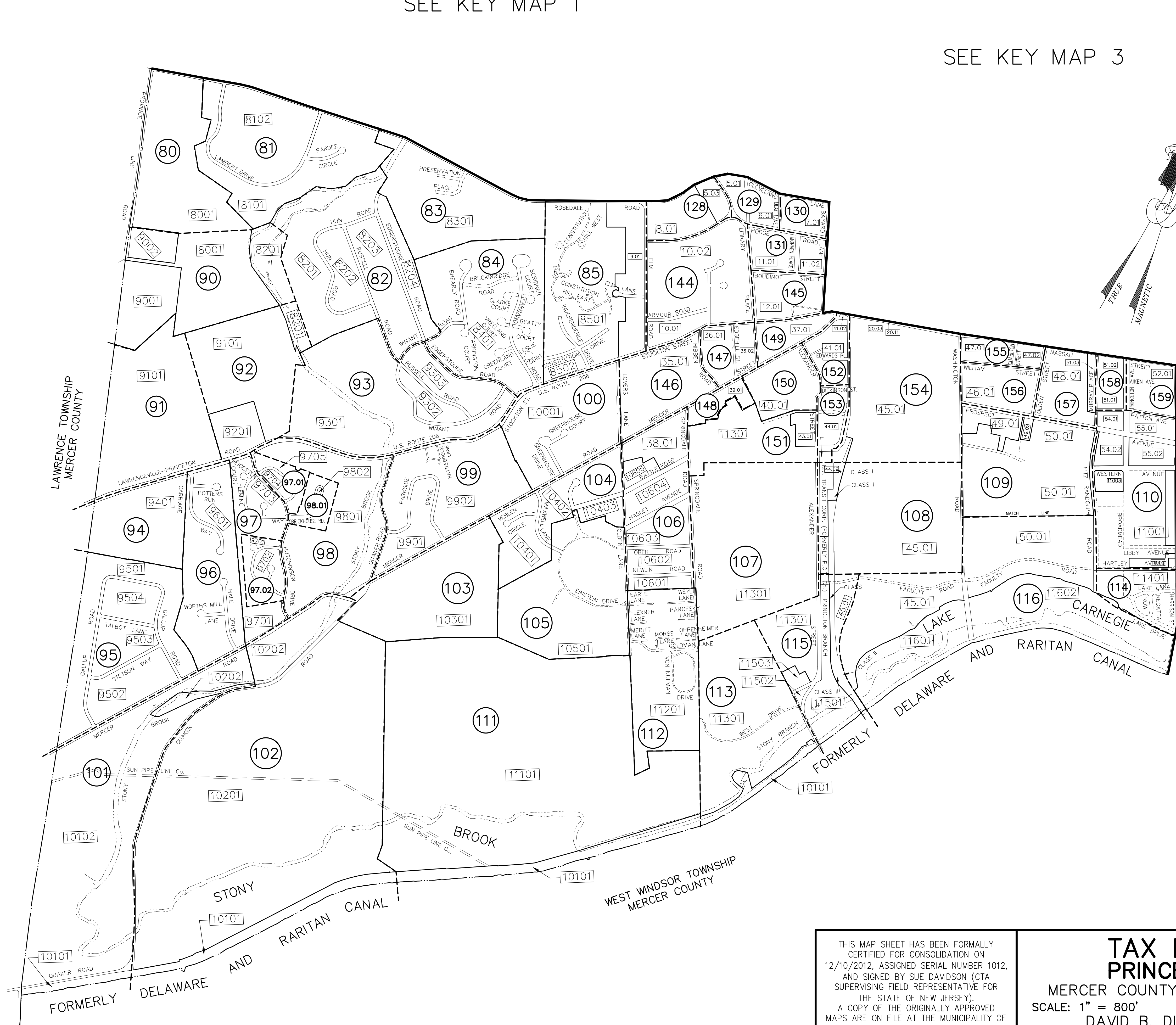


SEE KEY MAP 1

SEE KEY MAP 3

LEGEND

- 51 DETAIL SHEET NUMBER
- SHEET LIMIT
- BLOCK LIMIT
- WASHINGTON ST. STREET NAME
- WASHINGTON ST. PRIVATE STREET
- 102 BLOCK NUMBER
- MUNICIPAL BOUNDARY
- COUNTY BOUNDARY



SEE KEY MAP 3

REVISIONS		
DATE	L.S. NAME	NO.
10/1/13	DAVID B. DIXON, PLS	27282

THIS MAP SHEET HAS BEEN FORMALLY CERTIFIED FOR CONSOLIDATION ON 12/10/2012, ASSIGNED SERIAL NUMBER 1012, AND SIGNED BY SUE DAVIDSON (CTA SUPERVISING FIELD REPRESENTATIVE FOR THE STATE OF NEW JERSEY). A COPY OF THE ORIGINALLY APPROVED MAPS ARE ON FILE AT THE MUNICIPALITY OF PRINCETON LOCATED AT 400 WITHERSPOON STREET, PRINCETON, NJ. THE NEW JERSEY STATE DIVISION OF TAXATION IS RETAINING THE OFFICIAL APPROVED MAPS.

TAX MAP PRINCETON
 MERCER COUNTY, NEW JERSEY
 SCALE: 1" = 800' OCTOBER, 2012
 DAVID B. DIXON, PLS
 Professional Land Surveyor N.J. Lic. No.27282
 OMLAND ENGINEERING ASSOCIATES, INC.
 CEDAR KNOLLS, NEW JERSEY
 To Show Conditions as of October, 2012