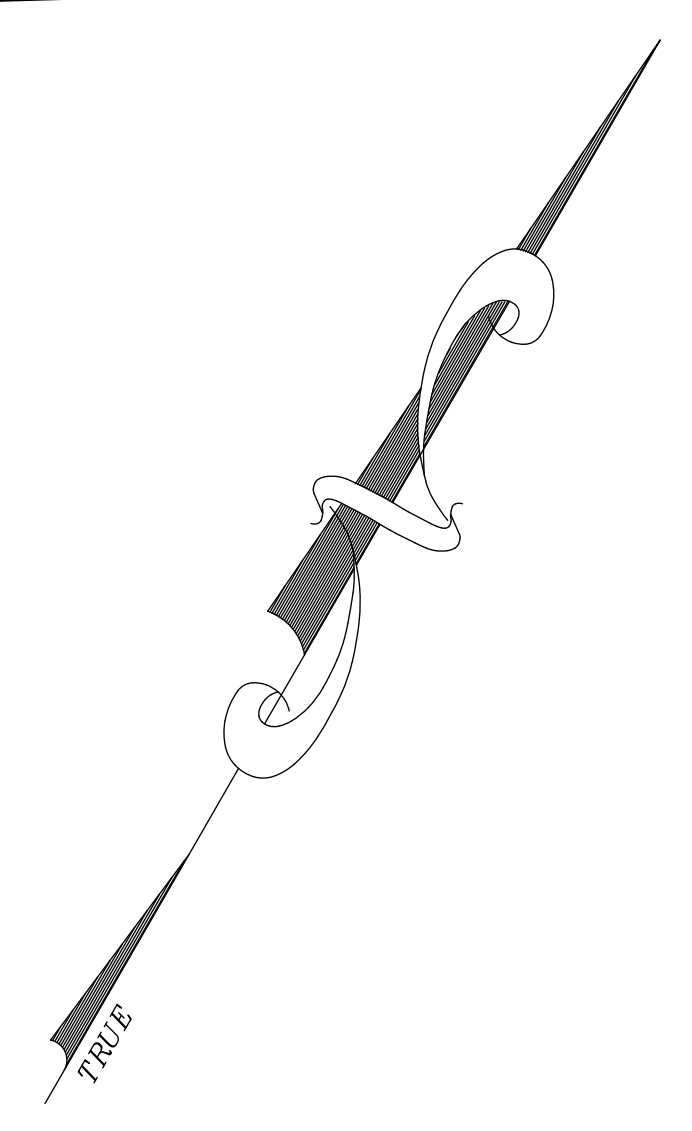
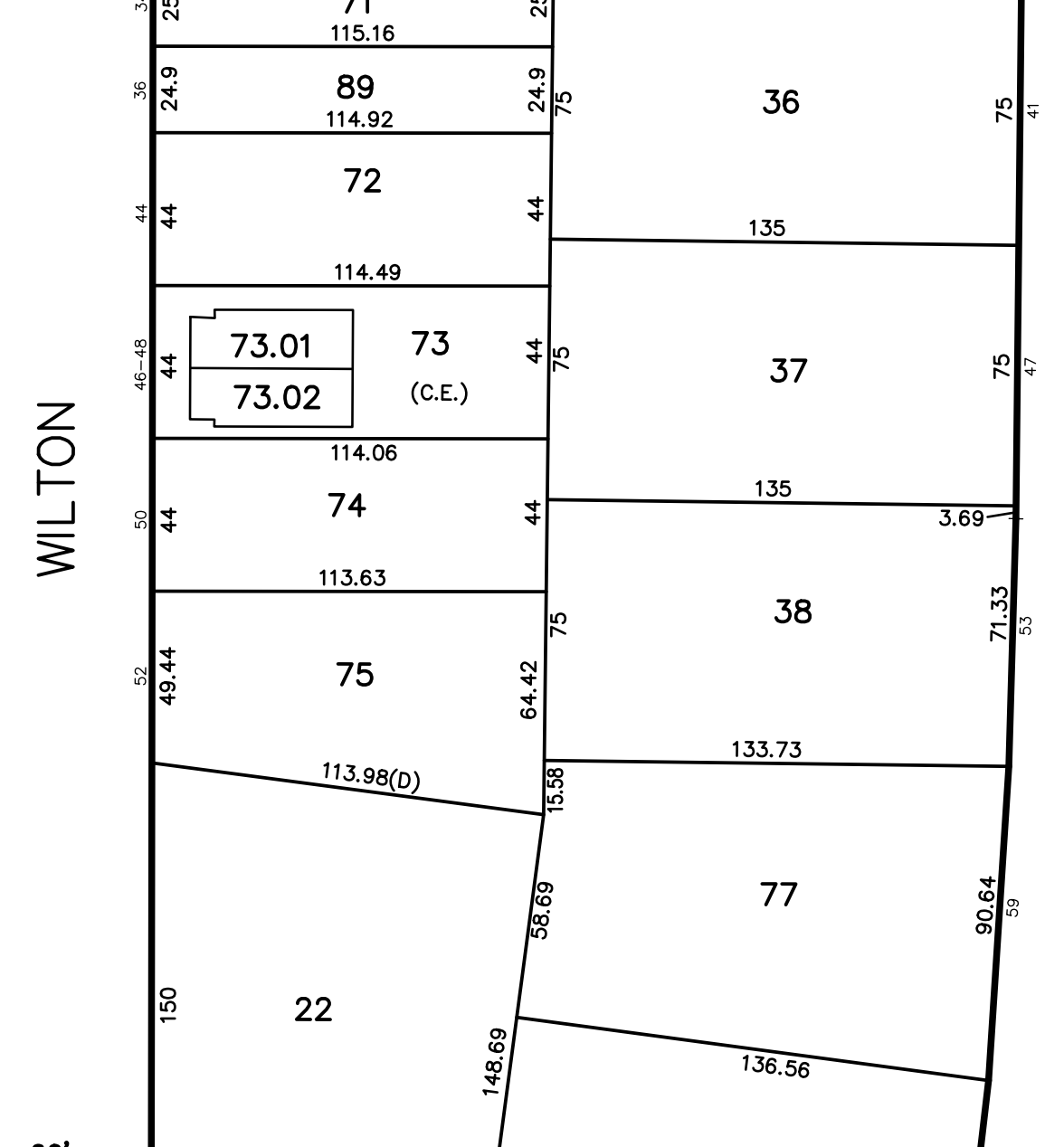
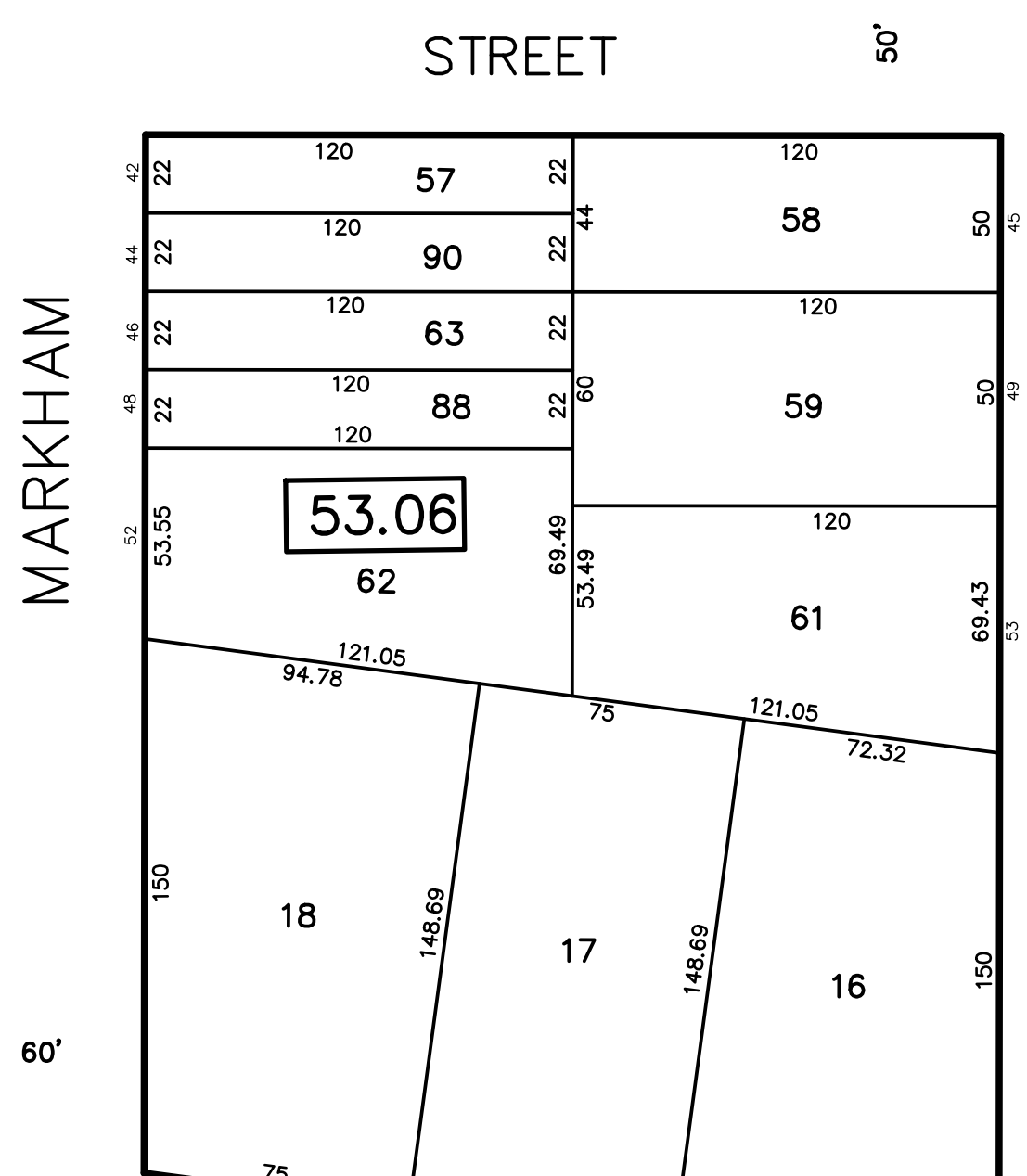
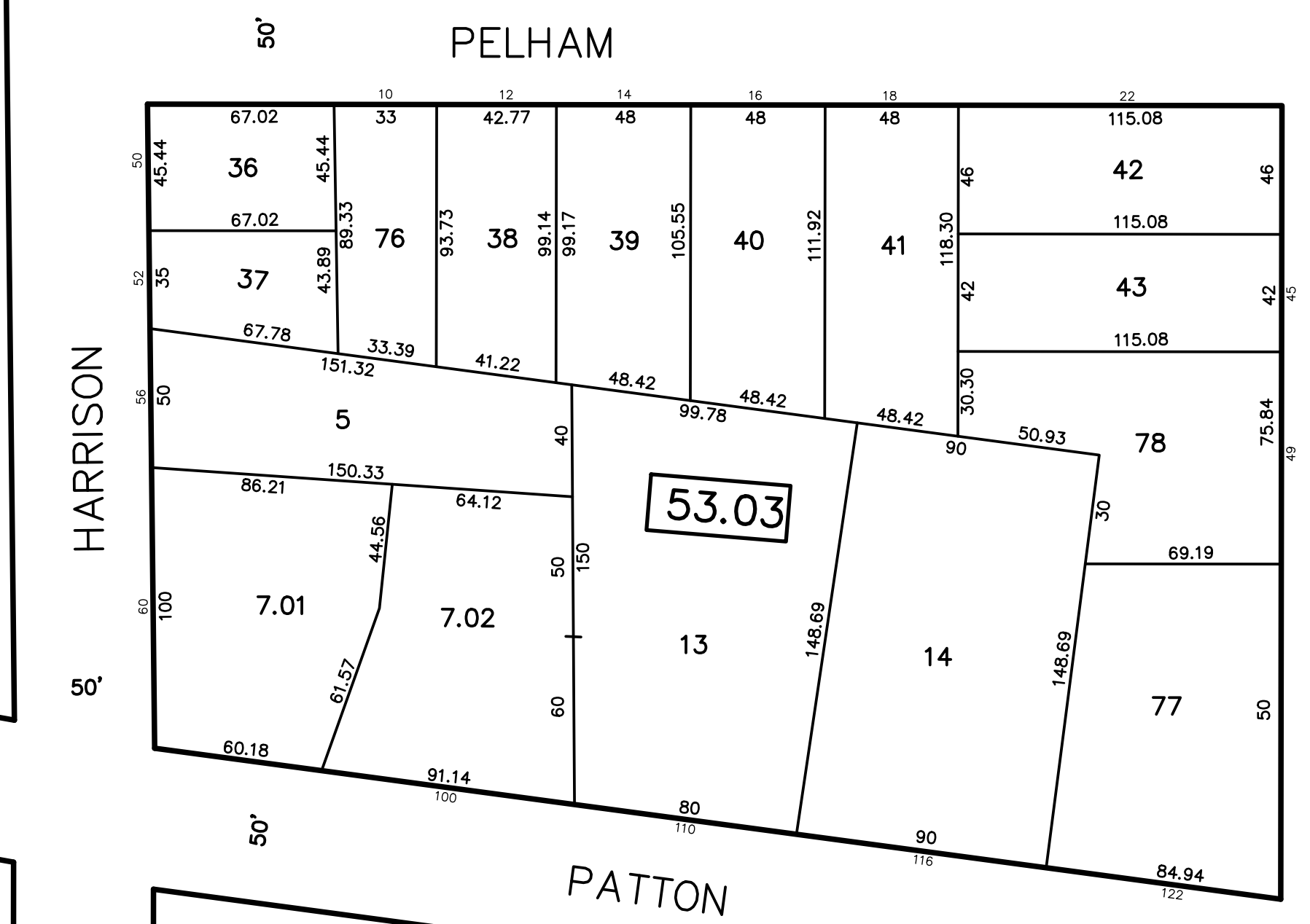
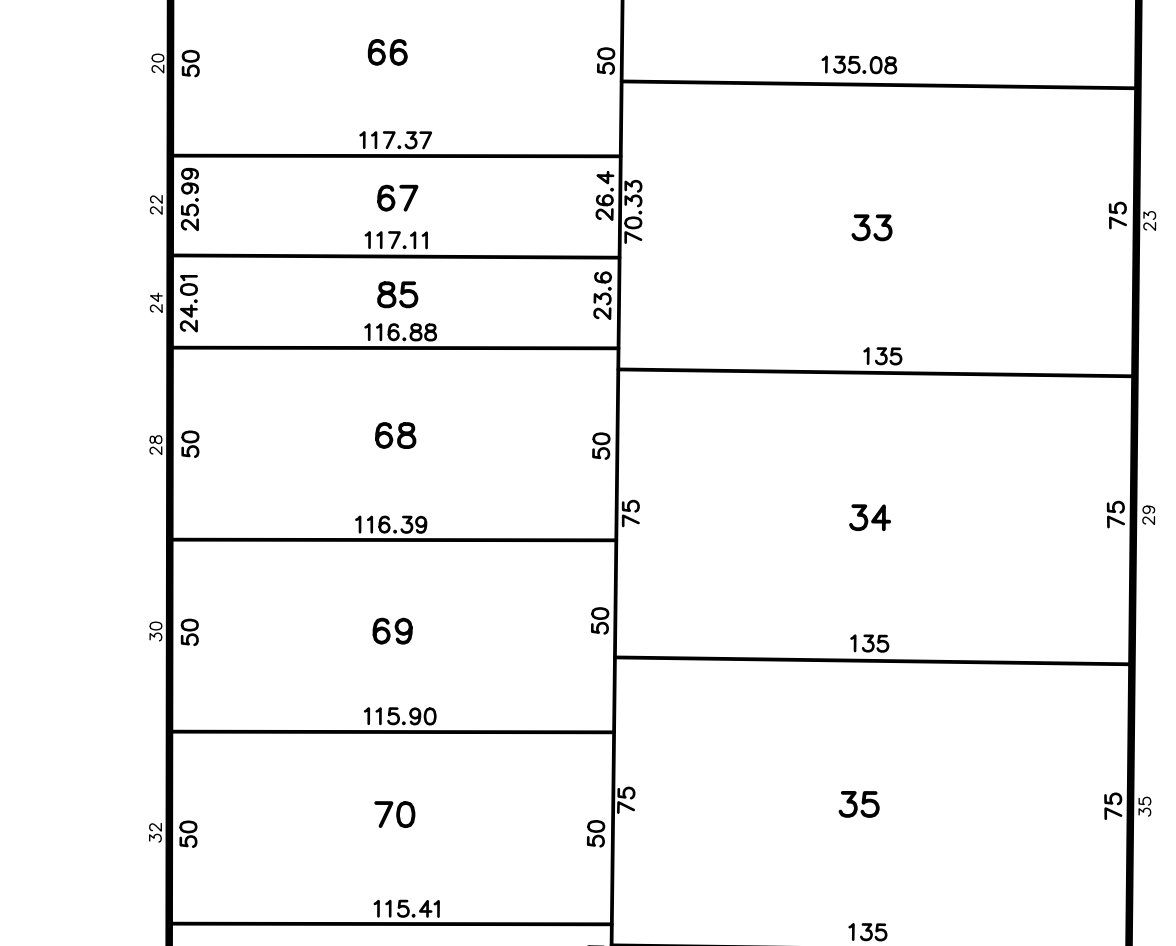
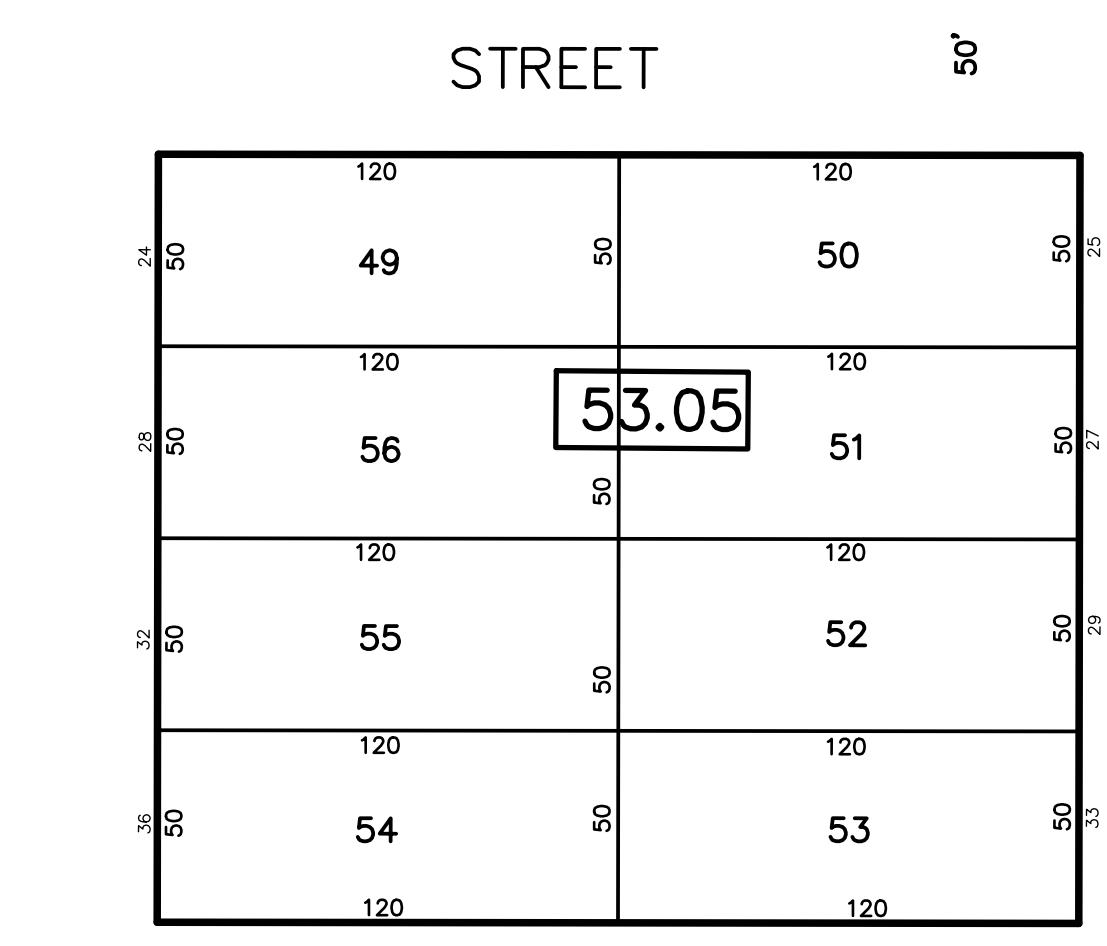
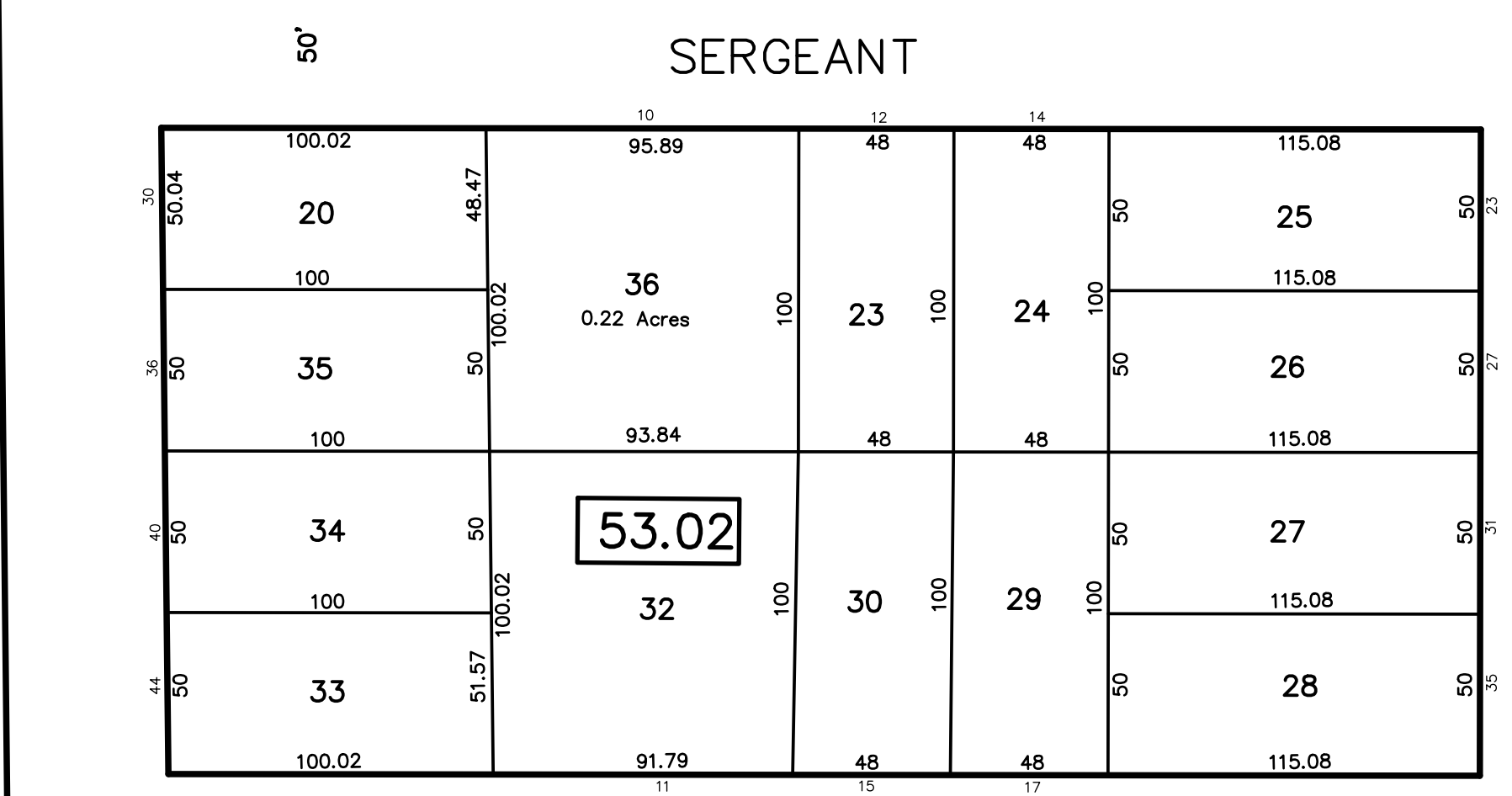
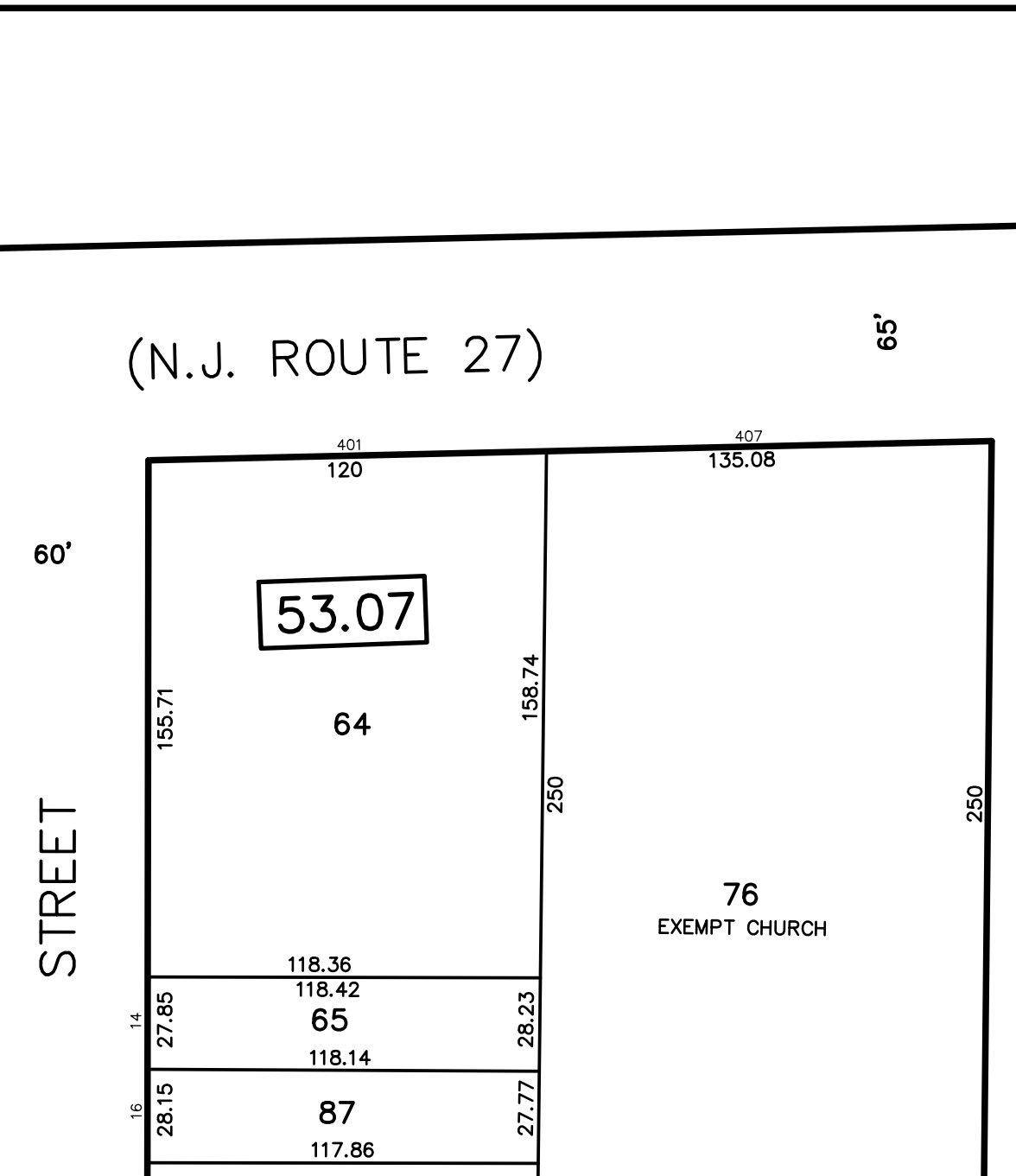
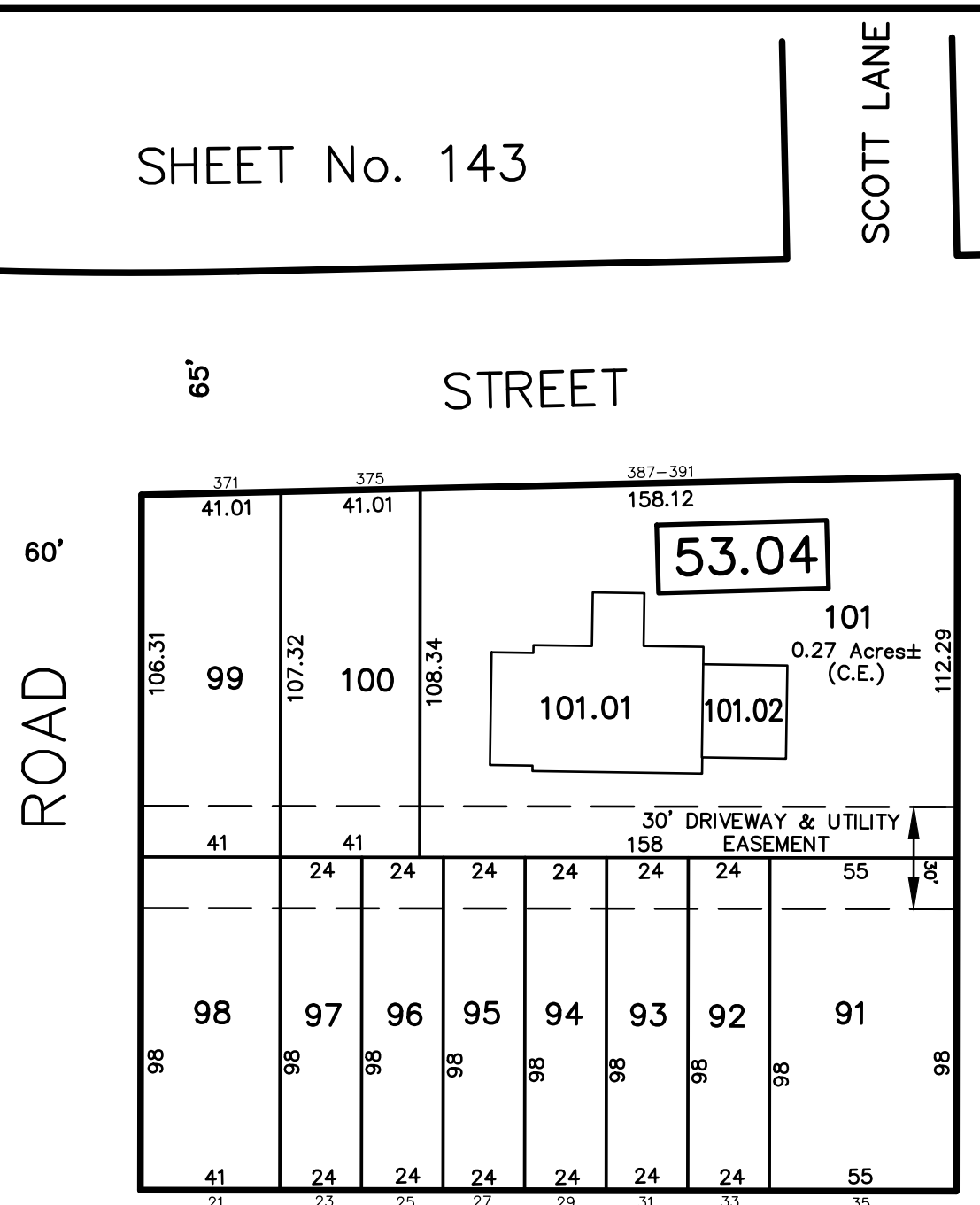
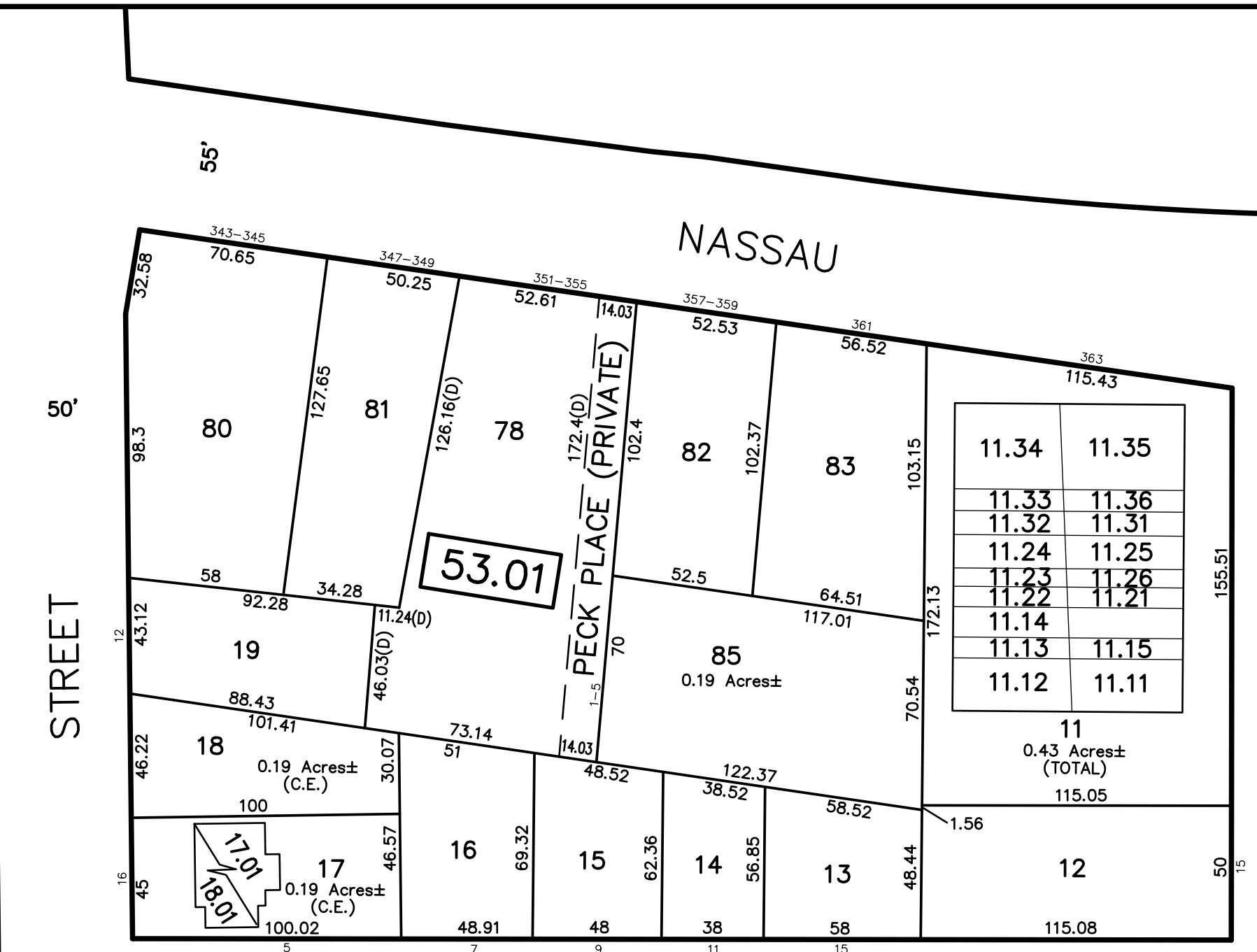


SHEET No. 143

REVISIONS		
DATE	L.S. NAME	NO.
10/1/15	GREGORY SANDUSKY	GB36758
10/31/16	GREGORY SANDUSKY	GB36758
10/1/18	GREGORY SANDUSKY	GB36758
10/1/19	GREGORY SANDUSKY	GB36758
10/1/20	GREGORY SANDUSKY	GB36758



SHEET No. 161

Block	Lot	Qualifier	Level	Area	Address
53.01	11.11	C01	1st Floor	1,336 S.F.	1 MARKHAM ROAD 1A
53.01	11.12	C02	1st Floor	1,335 S.F.	1 MARKHAM ROAD 1B
53.01	11.13	C03	1st Floor	1,027 S.F.	1 MARKHAM ROAD 1C
53.01	11.14	C04	1st Floor	1,099 S.F.	1 MARKHAM ROAD 1D
53.01	11.15	C05	1st Floor	1,245 S.F.	1 MARKHAM ROAD 1E
53.01	11.21	C06	2nd Floor	1,344 S.F.	1 MARKHAM ROAD 2A
53.01	11.22	C07	2nd Floor	1,344 S.F.	1 MARKHAM ROAD 2B
53.01	11.23	C08	2nd Floor	1,233 S.F.	1 MARKHAM ROAD 2C
53.01	11.24	C09	2nd Floor	1,233 S.F.	1 MARKHAM ROAD 2D
53.01	11.25	C10	2nd Floor	1,285 S.F.	1 MARKHAM ROAD 2E
53.01	11.26	C11	2nd Floor	1,233 S.F.	1 MARKHAM ROAD 2F
53.01	11.31	C12	3rd Floor	1,344 S.F.	1 MARKHAM ROAD 3A
53.01	11.32	C13	3rd Floor	1,344 S.F.	1 MARKHAM ROAD 3B
53.01	11.33	C14	3rd Floor	1,233 S.F.	1 MARKHAM ROAD 3C
53.01	11.34	C15	3rd Floor	1,285 S.F.	1 MARKHAM ROAD 3D
53.01	11.35	C16	3rd Floor	1,285 S.F.	1 MARKHAM ROAD 3E
53.01	11.36	C17	3rd Floor	1,233 S.F.	1 MARKHAM ROAD 3F
53.01	17.01	C01		2,070 S.F.	16 HARRISON STREET
53.01	18.01	C01		2,070 S.F.	5 SERGEANT STREET
53.04	101.01	C01		2,624 S.F.	387 NASSAU STREET
53.04	101.02	C02		1,164 S.F.	391 NASSAU STREET UNIT 2
53.07	73.01	C01		1,144 S.F.	46 WILTON ST
53.07	73.02	C02		1,144 S.F.	48 WILTON ST

SHEET No. 159

THIS MAP SHEET HAS BEEN FORMALLY CERTIFIED FOR CONSOLIDATION ON 12/10/2012, ASSIGNED SERIAL NUMBER 1012, AND SIGNED BY SUE DAVIDSON (CTA SUPERVISING FIELD REPRESENTATIVE FOR THE STATE OF NEW JERSEY). A COPY OF THE ORIGINALLY APPROVED MAPS ARE ON FILE AT THE MUNICIPALITY OF PRINCETON LOCATED AT 400 WITHERSPOON STREET, PRINCETON, NJ. THE NEW JERSEY STATE DIVISION OF TAXATION IS RETAINING THE OFFICIAL APPROVED MAPS.

This map has been redrawn using Computer Aided Drafting/Design (CAD/D) based on the map prepared by Kenneth R. Raikes, August, 2011.

SHEET No. 161

TAX MAP PRINCETON
 MERCER COUNTY, NEW JERSEY
 SCALE: 1" = 50' OCTOBER, 2012
 DAVID B. DIXON, PLS
 Professional Land Surveyor N.J. Lic. No.27282
 OMLAND ENGINEERING ASSOCIATES, INC.
 CEDAR KNOLLS, NEW JERSEY
 To Show Conditions as of October, 2012