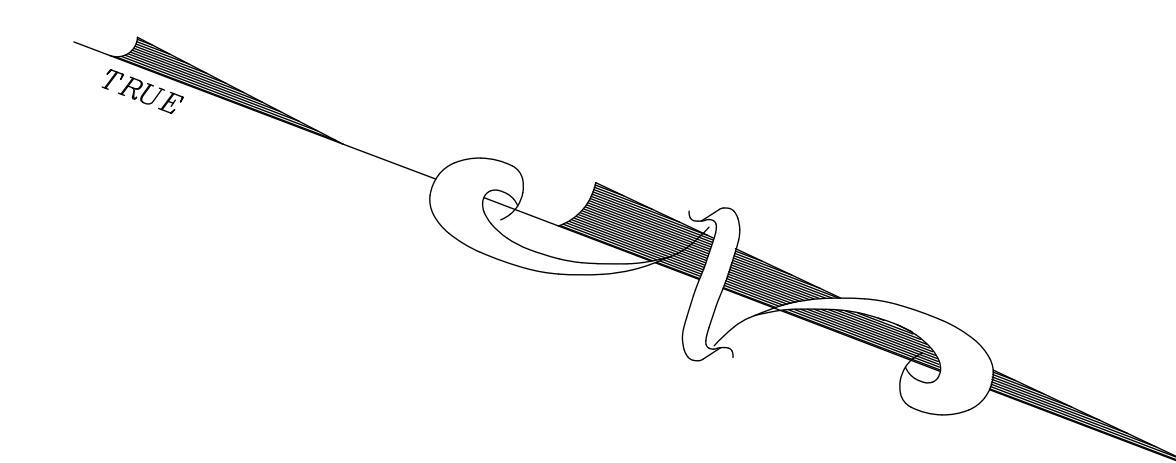
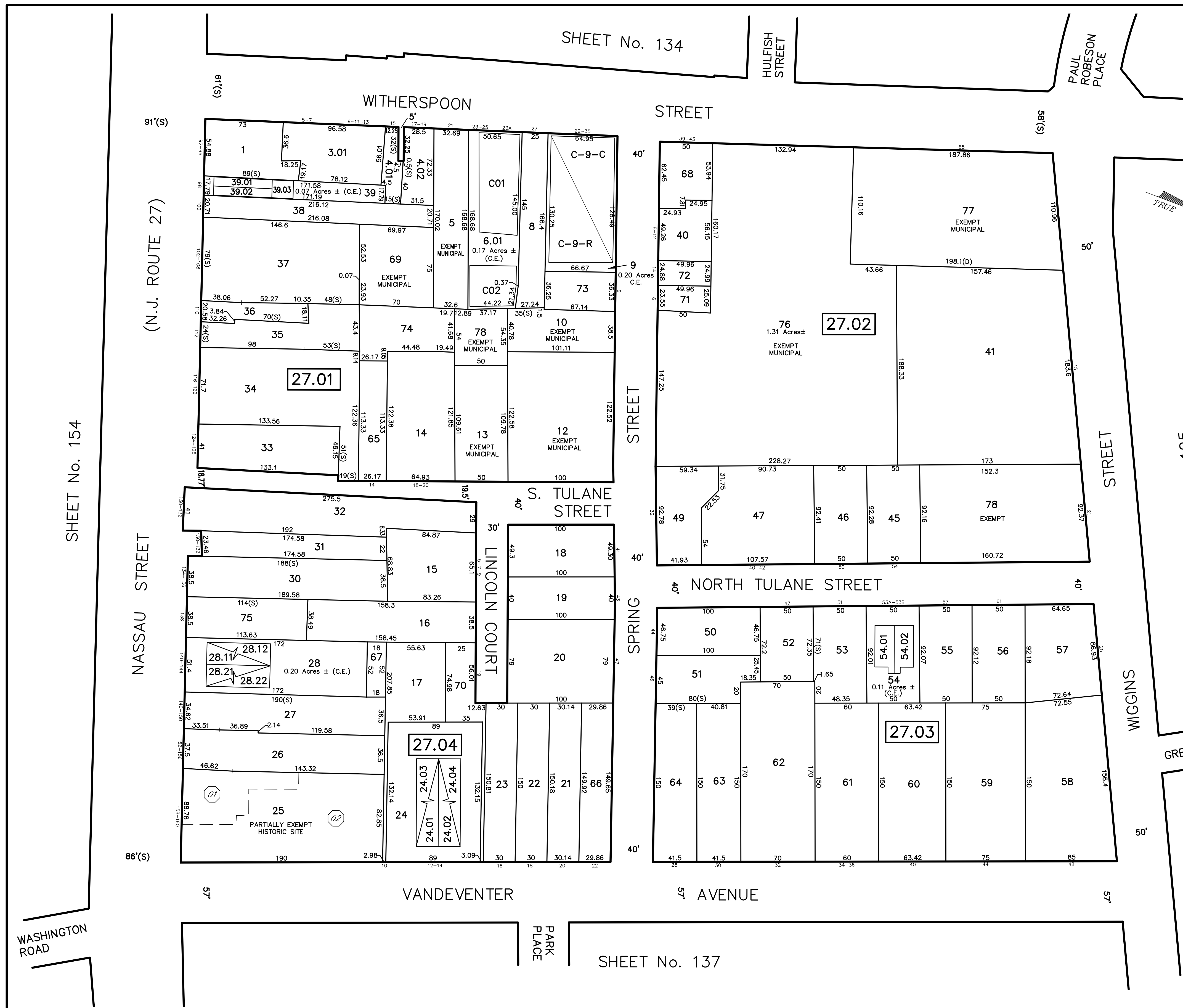


Princeton Qualifiers					
Trustees of Princeton University					
BLOCK	LOT	Qualifier	Building Association	Acreage	
27.04	25	D01	160 NAS GARDEN THEATRE	0.09± / -Ac.	
		D02	158 NAS BAINBRIDGE HOUSE	0.28± / -Ac.	

QUALIFIER LEGEND
 DENOTES QUALIFIER NUMBER

Block	Lot	Qualifier	Level	Area	Address
27.01	9	C-9-c		30,098 S.F.	COMMERCIAL UNIT
27.01	9	C-9-R		9,271 S.F.	16 RESIDENTIAL UNITS
27.01	6.01	CO1		2,484 S.F.	23A WITHERSPOON ST.
27.01	6.01	CO2		2,484 S.F.	23-25 WITHERSPOON ST.
27.01	39.01	CO1		2,484 S.F.	98 NASSAU STREET
27.01	39.02	CO2		1,044 S.F.	98 NASSAU STREET
27.01	39.03	CO3		640 S.F.	98 NASSAU STREET
27.03	54.01	CO1		1,648 S.F.	53A TULANE ST. N.
27.03	54.02	CO2		1,648 S.F.	53B TULANE ST. N.
27.04	24.01	CO1		2,343 S.F.	12 VANDEVENTER AVE.
27.04	24.02	CO2		2,392 S.F.	14A VANDEVENTER AVE.
27.04	24.03	CO3		1,148 S.F.	14B VANDEVENTER AVE.
27.04	24.04	CO4		640 S.F.	14C VANDEVENTER AVE.
27.04	28.11	CO1		3,031 S.F.	140 NASSAU STREET
27.04	28.12	CO2		1,565 S.F.	142 NASSAU STREET
27.04	28.21	OR1		672 S.F.	140 NASSAU STREET
27.04	28.22	OR2		1,315 S.F.	142 NASSAU STREET



REVISIONS		
DATE	NAME	NO.
10/1/14	GREGORY SANDUSKY	GB36758
10/1/15	GREGORY SANDUSKY	GB36758
10/31/16	GREGORY SANDUSKY	GB36758
10/1/17	GREGORY SANDUSKY	GB36758
10/1/18	GREGORY SANDUSKY	GB36758
10/1/21	GREGORY SANDUSKY	GB36758

This map has been redrawn using Computer Aided Drafting/Design (CAD/D) based on the map prepared by Kenneth R. Rolke, August, 2011.

THIS MAP SHEET HAS BEEN FORMALLY CERTIFIED FOR CONSOLIDATION ON 12/10/2012, ASSIGNED SERIAL NUMBER 1012, AND SIGNED BY SUE DAVIDSON (CTA SUPERVISING FIELD REPRESENTATIVE FOR THE STATE OF NEW JERSEY). A COPY OF THE ORIGINALLY APPROVED MAPS ARE ON FILE AT THE MUNICIPALITY OF PRINCETON LOCATED AT 400 WITHERSPOON STREET, PRINCETON, NJ. THE NEW JERSEY STATE DIVISION OF TAXATION IS RETAINING THE OFFICIAL APPROVED MAPS.

TAX MAP PRINCETON
 MERCER COUNTY, NEW JERSEY
 SCALE: 1" = 50' OCTOBER, 2012
 DAVID B. DIXON, PLS
 Professional Land Surveyor N.J. Lic. No.27282
 OMLAND ENGINEERING ASSOCIATES, INC.
 CEDAR KNOLLS, NEW JERSEY
 To Show Conditions as of October, 2012