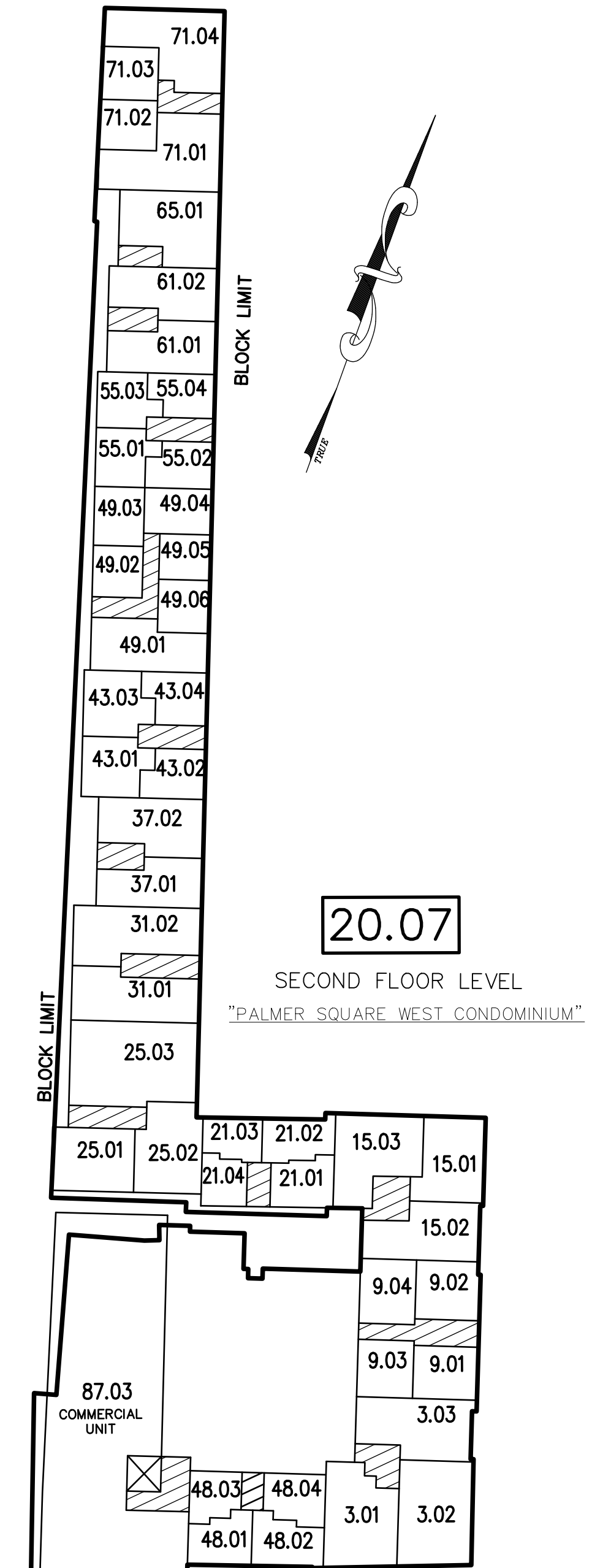
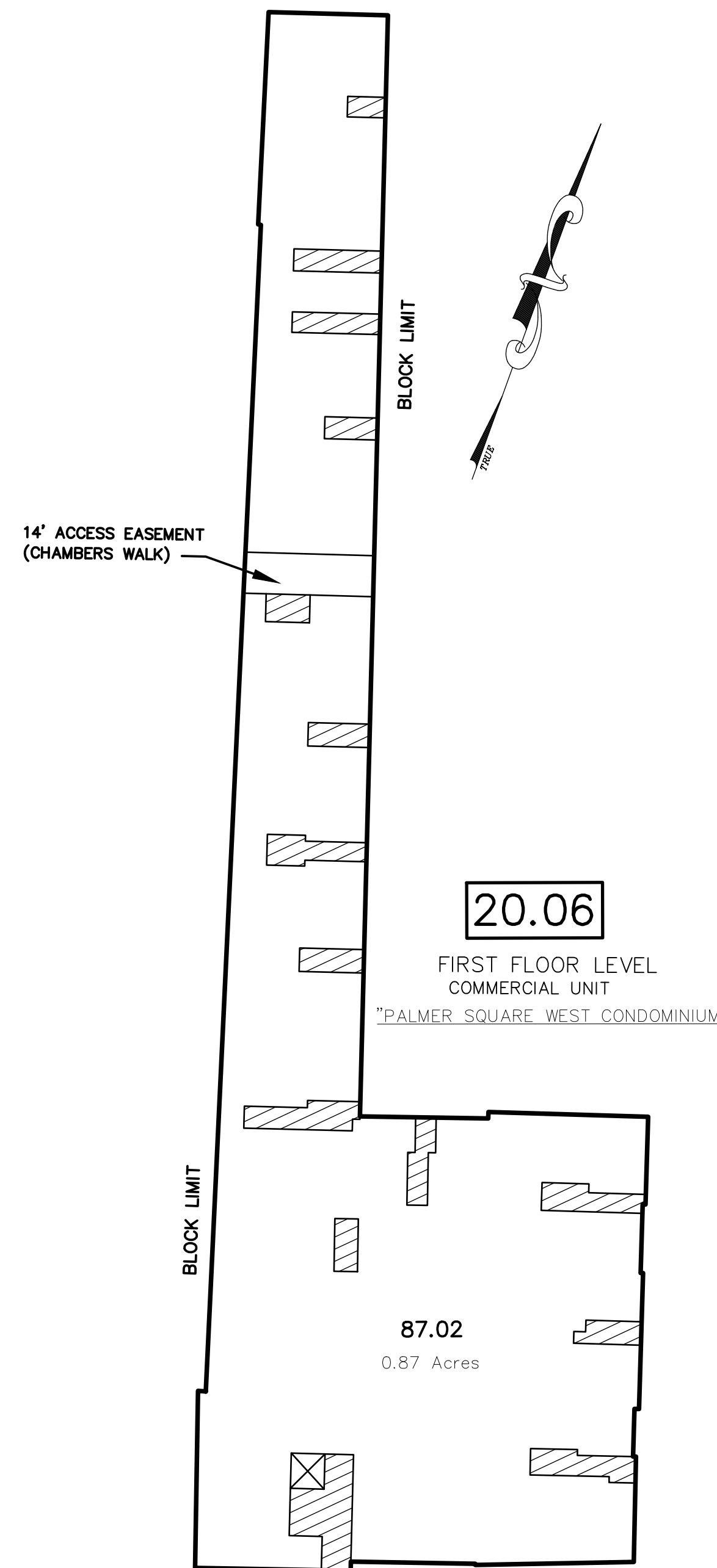
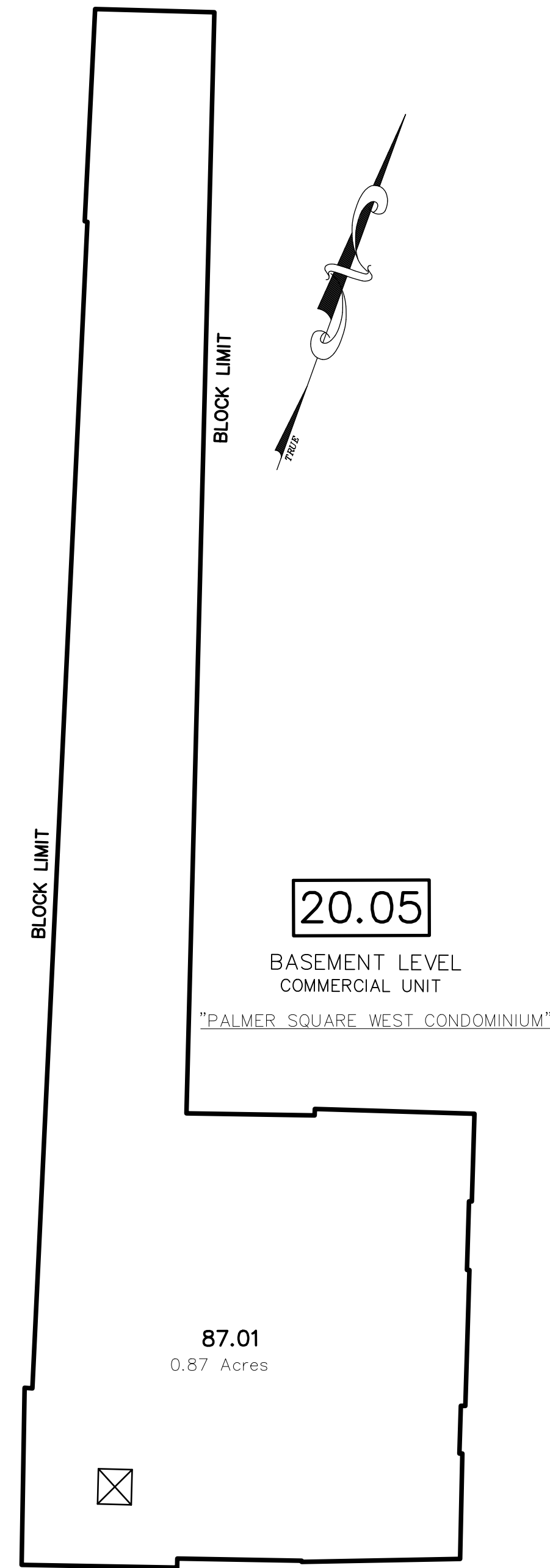


PALMER SQUARE WEST CONDOMINIUMS

Block	Lot	Qualifier	Level	Area	Address
20.05	87.01		Basement	0 S.F.	PALMER SQUARE WEST
20.06	87.02	C108	1st Floor	0 S.F.	PALMER SQUARE WEST
20.07	3.01	C3A	2nd Floor	820 S.F.	3 PALMER SQ. WEST UNIT A
20.07	3.02	C3B	2nd Floor	640 S.F.	3 PALMER SQ. WEST UNIT B
20.07	3.03	C3C	2nd Floor	632 S.F.	3 PALMER SQ. WEST UNIT C
20.07	9.01	C9A	2nd Floor	306 S.F.	9 PALMER SQ. WEST UNIT A
20.07	9.02	C9B	2nd Floor	308 S.F.	9 PALMER SQ. WEST UNIT B
20.07	9.03	C9C	2nd Floor	304 S.F.	9 PALMER SQ. WEST UNIT C
20.07	9.04	C9D	2nd Floor	304 S.F.	9 PALMER SQ. WEST UNIT D
20.07	15.01	C15A	2nd Floor	620 S.F.	15 PALMER SQ. WEST UNIT A
20.07	15.02	C15B	2nd Floor	612 S.F.	15 PALMER SQ. WEST UNIT B
20.07	15.03	C15C	2nd Floor	773 S.F.	15 PALMER SQ. WEST UNIT C
20.07	21.01	C21A	2nd Floor	272 S.F.	21 PALMER SQ. WEST UNIT A
20.07	21.02	C21B	2nd Floor	308 S.F.	21 PALMER SQ. WEST UNIT B
20.07	21.03	C21C	2nd Floor	308 S.F.	21 PALMER SQ. WEST UNIT C
20.07	21.04	C21D	2nd Floor	272 S.F.	21 PALMER SQ. WEST UNIT D
20.07	25.01	C25A	2nd Floor	625 S.F.	25 PALMER SQ. WEST UNIT A
20.07	25.02	C25B	2nd Floor	635 S.F.	25 PALMER SQ. WEST UNIT B
20.07	25.03	C25C	2nd Floor	845 S.F.	25 PALMER SQ. WEST UNIT C
20.07	31.01	C31A	2nd Floor	518 S.F.	31 PALMER SQ. WEST UNIT A
20.07	31.02	C31B	2nd Floor	518 S.F.	31 PALMER SQ. WEST UNIT B
20.07	37.01	C37A	2nd Floor	512 S.F.	37 PALMER SQ. WEST UNIT A
20.07	37.02	C37B	2nd Floor	518 S.F.	37 PALMER SQ. WEST UNIT B
20.07	43.01	C43A	2nd Floor	252 S.F.	43 PALMER SQ. WEST UNIT A
20.07	43.02	C43B	2nd Floor	285 S.F.	43 PALMER SQ. WEST UNIT B
20.07	43.03	C43C	2nd Floor	252 S.F.	43 PALMER SQ. WEST UNIT C
20.07	43.04	C43D	2nd Floor	285 S.F.	43 PALMER SQ. WEST UNIT D
20.07	48.01	C48A	2nd Floor	290 S.F.	48 NASSAU STREET UNIT A
20.07	48.02	C48B	2nd Floor	265 S.F.	48 NASSAU STREET UNIT B
20.07	48.03	C48C	2nd Floor	260 S.F.	48 NASSAU STREET UNIT C
20.07	48.04	C48D	2nd Floor	260 S.F.	48 NASSAU STREET UNIT D
20.07	49.01	C49A	2nd Floor	425 S.F.	49 PALMER SQ. WEST UNIT A
20.07	49.02	C49B	2nd Floor	232 S.F.	49 PALMER SQ. WEST UNIT B
20.07	49.03	C49C	2nd Floor	280 S.F.	49 PALMER SQ. WEST UNIT C
20.07	49.04	C49D	2nd Floor	266 S.F.	49 PALMER SQ. WEST UNIT D
20.07	49.05	C49E	2nd Floor	231 S.F.	49 PALMER SQ. WEST UNIT E
20.07	49.06	C49F	2nd Floor	238 S.F.	49 PALMER SQ. WEST UNIT F
20.07	55.01	C55A	2nd Floor	280 S.F.	55 PALMER SQ. WEST UNIT A
20.07	55.02	C55B	2nd Floor	280 S.F.	55 PALMER SQ. WEST UNIT B
20.07	55.03	C55C	2nd Floor	285 S.F.	55 PALMER SQ. WEST UNIT C
20.07	55.04	C55D	2nd Floor	285 S.F.	55 PALMER SQ. WEST UNIT D
20.07	61.01	C61A	2nd Floor	480 S.F.	61 PALMER SQ. WEST UNIT A
20.07	61.02	C61B	2nd Floor	480 S.F.	61 PALMER SQ. WEST UNIT B
20.07	65.01	C65A	2nd Floor	1,143 S.F.	65 PALMER SQ. WEST UNIT A
20.07	71.01	C71A	2nd Floor	801 S.F.	71 PALMER SQ. WEST UNIT A
20.07	71.02	C71B	2nd Floor	330 S.F.	71 PALMER SQ. WEST UNIT B
20.07	71.03	C71C	2nd Floor	330 S.F.	71 PALMER SQ. WEST UNIT C
20.07	71.04	C71D	2nd Floor	765 S.F.	71 PALMER SQ. WEST UNIT D
20.07	87.03		2nd Floor	0 S.F.	44 NASSAU STREET



LEGEND

- C.U. - COMMERCIAL UNIT
- [Hatched Box] - COMMON ELEMENT
- [Box with X] - ELEVATOR

This map has been redrawn using Computer Aided Drafting/Design (CAD/D) based on the map prepared by Kenneth R. Raikes, August, 2011.

REVISIONS		
DATE	NAME	NO.
10/1/14	GREGORY SANDUSKY	GB36758

THIS MAP SHEET HAS BEEN FORMALLY CERTIFIED FOR CONSOLIDATION ON 12/10/2012, ASSIGNED SERIAL NUMBER 1012, AND SIGNED BY SUE DAVIDSON (CTA SUPERVISING FIELD REPRESENTATIVE FOR THE STATE OF NEW JERSEY). A COPY OF THE ORIGINALLY APPROVED MAPS ARE ON FILE AT THE MUNICIPALITY OF PRINCETON LOCATED AT 400 WITHERSPOON STREET, PRINCETON, N.J. THE NEW JERSEY STATE DIVISION OF TAXATION IS RETAINING THE OFFICIAL APPROVED MAPS.

**TAX MAP PRINCETON**  
 MERCER COUNTY, NEW JERSEY  
 SCALE: 1" = 40' OCTOBER, 2012  
 DAVID B. DIXON, PLS  
 Professional Land Surveyor N.J. Lic. No.27282  
 OMLAND ENGINEERING ASSOCIATES, INC.  
 CEDAR KNOLLS, NEW JERSEY  
 To Show Conditions as of October, 2012