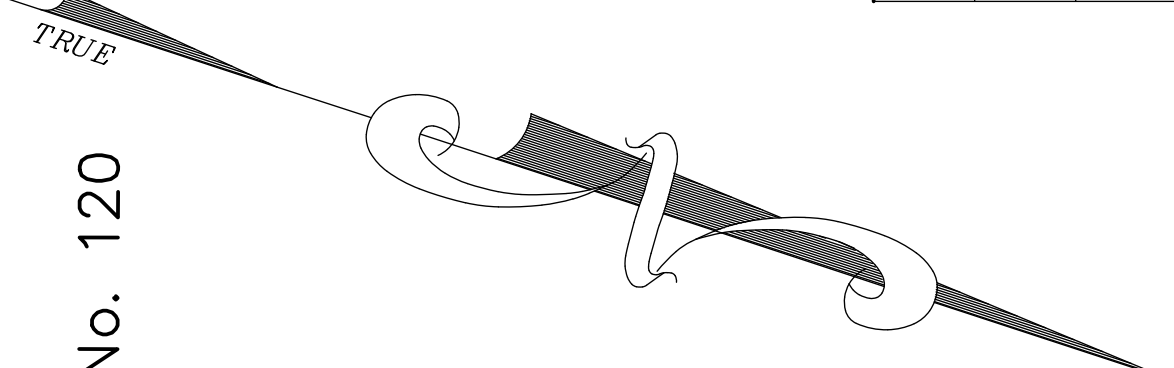


SHEET No. 132

SHEET No. 122

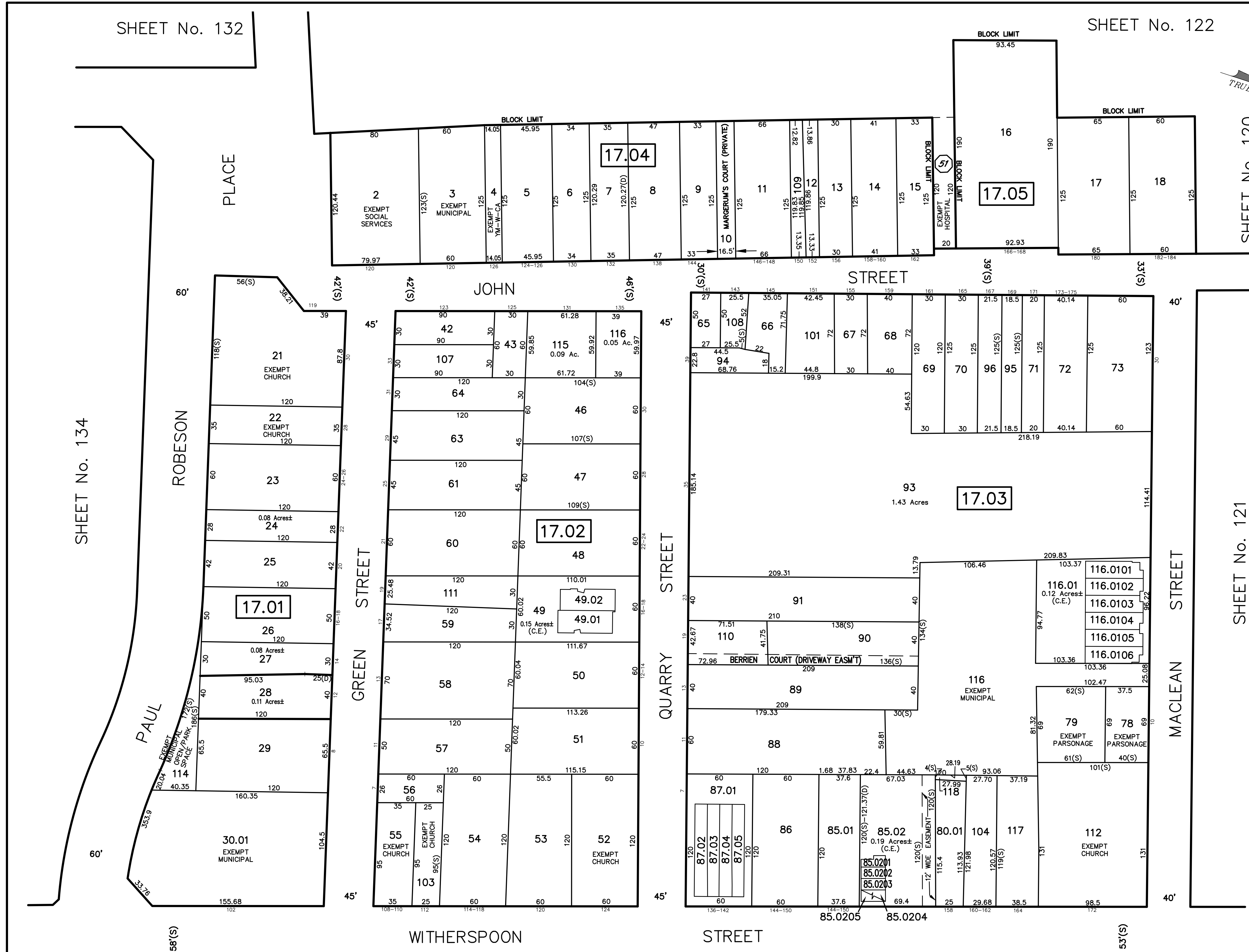
Princeton Qualifiers				
Trustees of Princeton University				
BLOCK	LOT	Qualifier	Building Association	Acreage
14.01	2	C51	JOHN STREET	0.06 Ac.



SHEET No. 134

SHEET No. 121

Block	Lot	Qualifier	Level	Area	Address
17.02	49.01	C01		2,433 S.F.	16 QUARRY STREET
17.02	49.02	C02		2,425 S.F.	18 QUARRY STREET
17.03	85.0201	C06		1,391 S.F.	6 TORREY LANE
17.03	85.0202	C04		1,391 S.F.	4 TORREY LANE
17.03	85.0203	C02		1,391 S.F.	2 TORREY LANE
17.03	85.0204	C154	1st Floor	1,695 S.F.	154 WITHERSPOON STREET
17.03	85.0205	C152	2nd Floor	1,695 S.F.	152 WITHERSPOON STREET
17.03	87.01	C01		1,130 S.F.	7 QUARRY STREET
17.03	87.02	C02		880 S.F.	136 WITHERSPOON STREET
17.03	87.03	C03		880 S.F.	138 WITHERSPOON STREET
17.03	87.04	C04		600 S.F.	140 WITHERSPOON STREET
17.03	87.05	C05		600 S.F.	142 WITHERSPOON STREET
17.03	116.0101	C01		1,336 S.F.	22 MACLEAN STREET
17.03	116.0102	C02		1,162 S.F.	20 MACLEAN STREET
17.03	116.0103	C03		1,162 S.F.	18 MACLEAN STREET
17.03	116.0104	C04		1,162 S.F.	16 MACLEAN STREET
17.03	116.0105	C05		1,162 S.F.	14 MACLEAN STREET
17.03	116.0106	C06		1,336 S.F.	12 MACLEAN STREET



REVISIONS		
DATE	NAME	NO.
05/08/13	DAVID B. DIXON - BLOCK 17.03	27282
10/1/14	GREGORY SANDUSKY	GB36758
10/1/15	GREGORY SANDUSKY	GB36758
10/31/16	GREGORY SANDUSKY	GB36758
10/1/17	GREGORY SANDUSKY	GB36758
10/1/18	GREGORY SANDUSKY	GB36758
10/1/20	GREGORY SANDUSKY	GB36758

This map has been redrawn using Computer Aided Drafting/Design (CAD/D) based on the map prepared by Kenneth R. Rolke, August, 2011.

THIS MAP SHEET HAS BEEN FORMALLY CERTIFIED FOR CONSOLIDATION ON 12/10/2012, ASSIGNED SERIAL NUMBER 1012, AND SIGNED BY SUE DAVIDSON (CTA SUPERVISING FIELD REPRESENTATIVE FOR THE STATE OF NEW JERSEY). A COPY OF THE ORIGINALLY APPROVED MAPS ARE ON FILE AT THE MUNICIPALITY OF PRINCETON LOCATED AT 400 WITHERSPOON STREET, PRINCETON, N.J. THE NEW JERSEY STATE DIVISION OF TAXATION IS RETAINING THE OFFICIAL APPROVED MAPS.

TAX MAP PRINCETON

MERCER COUNTY, NEW JERSEY
 SCALE: 1" = 50' OCTOBER, 2012
 DAVID B. DIXON, PLS
 Professional Land Surveyor N.J. Lic. No.27282
 OMLAND ENGINEERING ASSOCIATES, INC.
 CEDAR KNOLLS, NEW JERSEY
 To Show Conditions as of October, 2012