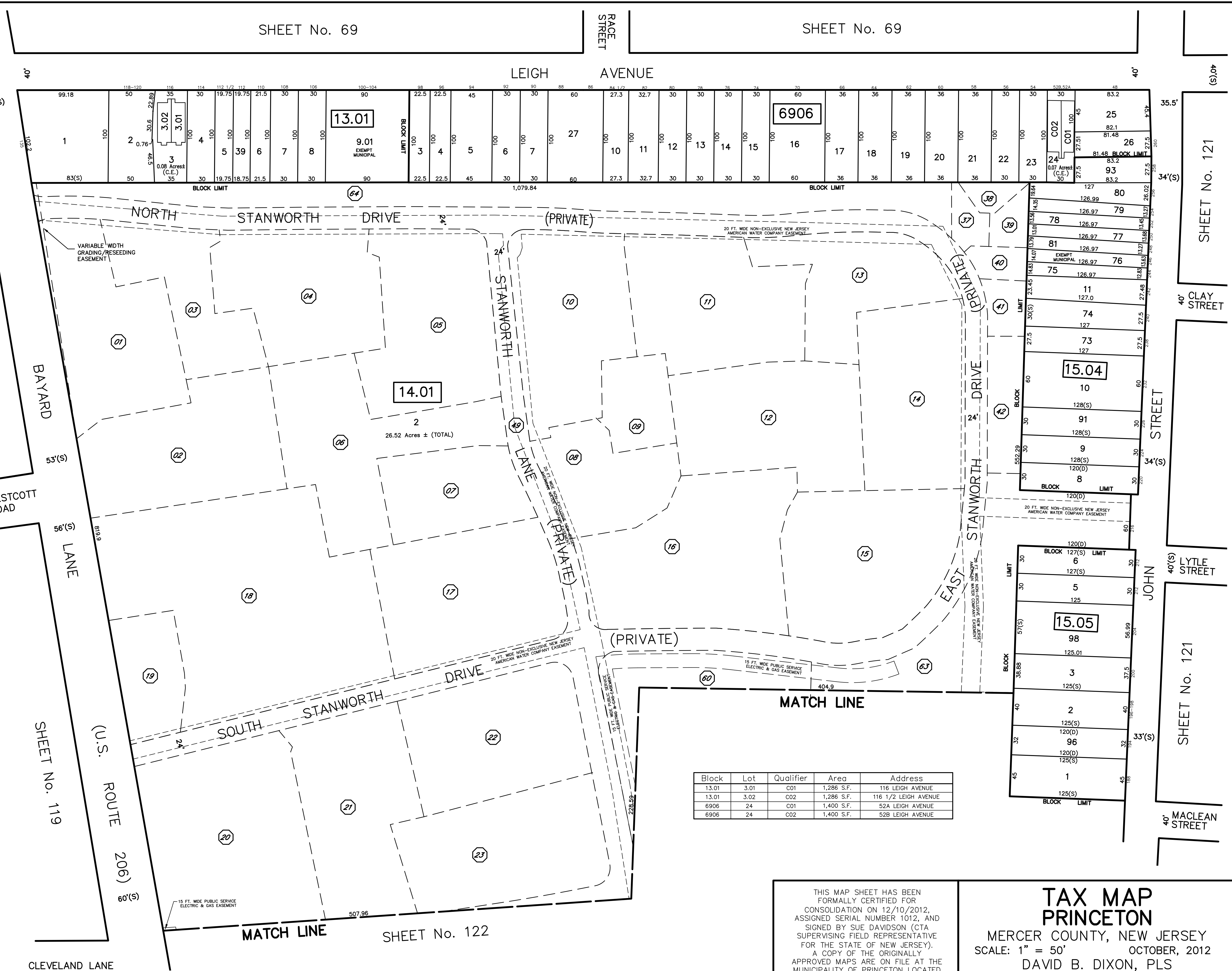


REVISIONS		
DATE	NAME	NO.
5/6/13	David B. Dixon	27282
10/1/15	GREGORY SANDUSKY	GB36758
10/31/16	GREGORY SANDUSKY	GB36758
10/1/18	GREGORY SANDUSKY	GB36758
10/1/20	GREGORY SANDUSKY	GB36758
10/1/21	GREGORY SANDUSKY	GB36758



Princeton Qualifiers			
BLOCK	LOT	Qualifier	Acres
14.01	2	D01 117-131 BAYARD LANE	0.54 Ac.
		D02 100-108 BAYARD LANE	0.57 Ac.
		D03 112-118 BAYARD LANE	0.34 Ac.
		D04 120-132 BAYARD LANE	0.51 Ac.
		D05 56-68/134-138 STANWORTH	0.59 Ac.
		D06 48-54 STANWORTH	0.58 Ac.
		D07 40-46 STANWORTH	0.31 Ac.
		D08 41-43 STANWORTH	0.10 Ac.
		D09 49-53 STANWORTH	0.24 Ac.
		D10 59-67/140-144 STANWORTH	0.55 Ac.
		D11 146-160 N STANWORTH	0.56 Ac.
		D12 162-168 N STANWORTH	0.57 Ac.
		D13 170-182/200 STANWORTH	0.40 Ac.
		D14 202-216 E STANWORTH	0.52 Ac.
		D15 260-262/300-312 STANWORTH	0.63 Ac.
		D16 314-328/31-33 STANWORTH	0.88 Ac.
		D17 30-32/352-358 STANWORTH	0.76 Ac.
		D18 360-382 STANWORTH 115 BAY	1.14 Ac.
		D19 107-113 BAYARD LANE	0.21 Ac.
		D20 97-105 BAYARD/371-377 STAN	0.77 Ac.
		D21 359-369 STANWORTH	0.57 Ac.
		D22 351-357/14-16 STANWORTH	0.57 Ac.
		D23 2-10 STANWORTH	0.43 Ac.
		D37 STANWORTH GAR #21+22+23	0.05 Ac.
		D38 STANWORTH GAR #24+25+26	0.04 Ac.
		D39 STANWORTH GAR #27+28+29+30	0.05 Ac.
		D40 STANWORTH GAR #31+32+33+34	0.05 Ac.
		D41 STANWORTH GAR #35+36+37	0.06 Ac.
		D42 STANWORTH GAR #38+39+40	0.13 Ac.
		D49 STANWORTH R.O.W.	1.67 Ac.
		D53 100 STANWORTH	0.88 Ac.
		D54 100-114 OAK LN.	0.42 Ac.
		D55 114-122 STANWORTH	0.43 Ac.
		D56 113 STANWORTH	0.55 Ac.
		D57 103-122 STANWORTH	0.48 Ac.
		D58 15-25 EAST MERWICK CT.	0.96 Ac.
		D59 1-13 EAST MERWICK CT.	0.72 Ac.
		D60 115 STANWORTH	1.60 Ac.
		D61 39-41 EAST MERWICK CT.	0.17 Ac.
		D62 27-38 EAST MERWICK CT.	0.59 Ac.
		D63 200-216 STANWORTH	1.26 Ac.
		D64 STANWORTH NORTH	0.64 Ac.
		SEE SH1 120 MATCH LINE	FOR OTHERS

QUALIFIER LEGEND
 DENOTES QUALIFIER NUMBER

Block	Lot	Qualifier	Area	Address
13.01	3.01	C01	1,286 S.F.	116 LEIGH AVENUE
13.01	3.02	C02	1,286 S.F.	116 1/2 LEIGH AVENUE
6906	24	C01	1,400 S.F.	52A LEIGH AVENUE
6906	24	C02	1,400 S.F.	52B LEIGH AVENUE

This map has been redrawn using Computer Aided Drafting/Design (CAD/D) based on the maps prepared by Matthew L. Martini, December, 1994 and Kenneth R. Rolke, August, 2011.

THIS MAP SHEET HAS BEEN FORMALLY CERTIFIED FOR CONSOLIDATION ON 12/10/2012, ASSIGNED SERIAL NUMBER 1012, AND SIGNED BY SUE DAVIDSON (CTA SUPERVISING FIELD REPRESENTATIVE FOR THE STATE OF NEW JERSEY). A COPY OF THE ORIGINALLY APPROVED MAPS ARE ON FILE AT THE MUNICIPALITY OF PRINCETON LOCATED AT 400 WITHERSPOON STREET, PRINCETON, NJ. THE NEW JERSEY STATE DIVISION OF TAXATION IS RETAINING THE OFFICIAL APPROVED MAPS.

TAX MAP PRINCETON
 MERCER COUNTY, NEW JERSEY
 SCALE: 1" = 50' OCTOBER, 2012
 DAVID B. DIXON, PLS
 Professional Land Surveyor N.J. Lic. No.27282
 OMLAND ENGINEERING ASSOCIATES, INC.
 CEDAR KNOLLS, NEW JERSEY
 To Show Conditions as of October, 2012