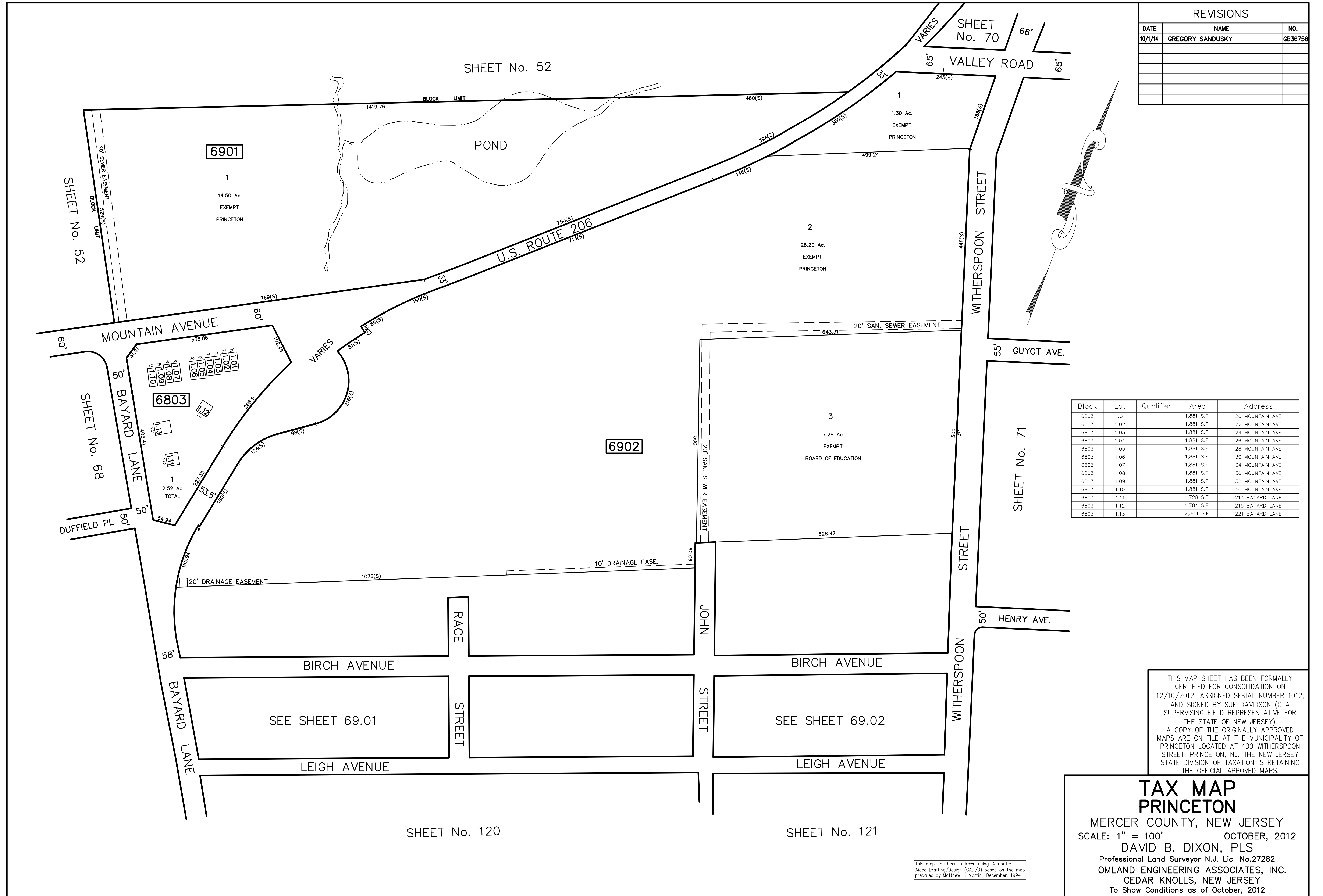
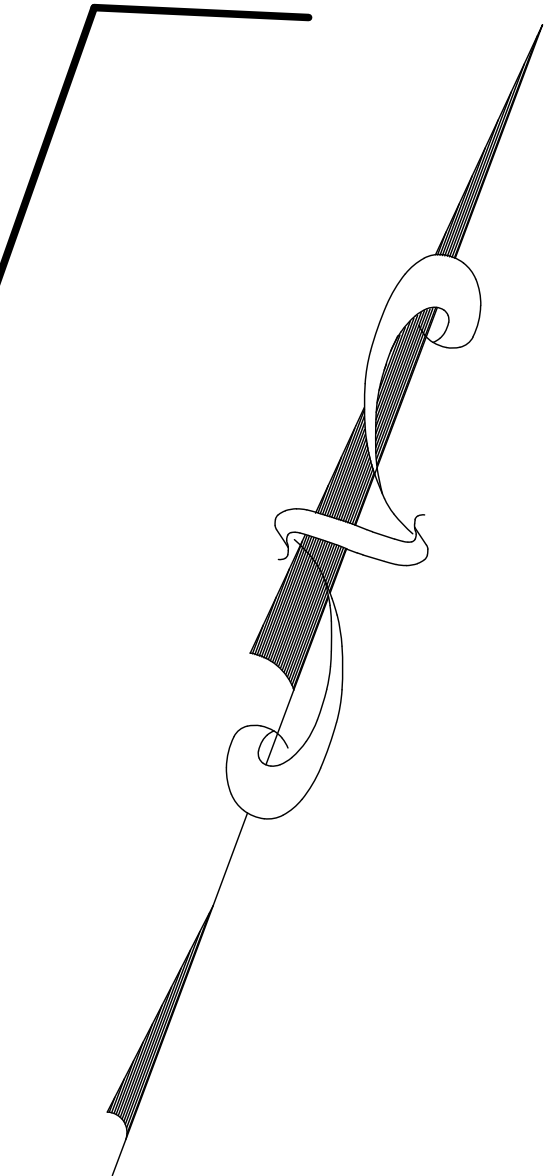


REVISIONS

DATE	NAME	NO.
10/1/14	GREGORY SANDUSKY	6836758



Block	Lot	Qualifier	Area	Address
6803	1.01		1,881 S.F.	20 MOUNTAIN AVE
6803	1.02		1,881 S.F.	22 MOUNTAIN AVE
6803	1.03		1,881 S.F.	24 MOUNTAIN AVE
6803	1.04		1,881 S.F.	26 MOUNTAIN AVE
6803	1.05		1,881 S.F.	28 MOUNTAIN AVE
6803	1.06		1,881 S.F.	30 MOUNTAIN AVE
6803	1.07		1,881 S.F.	34 MOUNTAIN AVE
6803	1.08		1,881 S.F.	36 MOUNTAIN AVE
6803	1.09		1,881 S.F.	38 MOUNTAIN AVE
6803	1.10		1,881 S.F.	40 MOUNTAIN AVE
6803	1.11		1,728 S.F.	213 BAYARD LANE
6803	1.12		1,784 S.F.	215 BAYARD LANE
6803	1.13		2,304 S.F.	221 BAYARD LANE

THIS MAP SHEET HAS BEEN FORMALLY CERTIFIED FOR CONSOLIDATION ON 12/10/2012, ASSIGNED SERIAL NUMBER 1012, AND SIGNED BY SUE DAVIDSON (CTA SUPERVISING FIELD REPRESENTATIVE FOR THE STATE OF NEW JERSEY). A COPY OF THE ORIGINALLY APPROVED MAPS ARE ON FILE AT THE MUNICIPALITY OF PRINCETON LOCATED AT 400 WITHERSPOON STREET, PRINCETON, N.J. THE NEW JERSEY STATE DIVISION OF TAXATION IS RETAINING THE OFFICIAL APPROVED MAPS.

**TAX MAP PRINCETON**

MERCER COUNTY, NEW JERSEY  
 SCALE: 1" = 100' OCTOBER, 2012  
 DAVID B. DIXON, PLS  
 Professional Land Surveyor N.J. Lic. No.27282  
 OMLAND ENGINEERING ASSOCIATES, INC.  
 CEDAR KNOLLS, NEW JERSEY  
 To Show Conditions as of October, 2012

This map has been redrawn using Computer Aided Drafting/Design (CAD) based on the map prepared by Matthew L. Marlini, December, 1994.