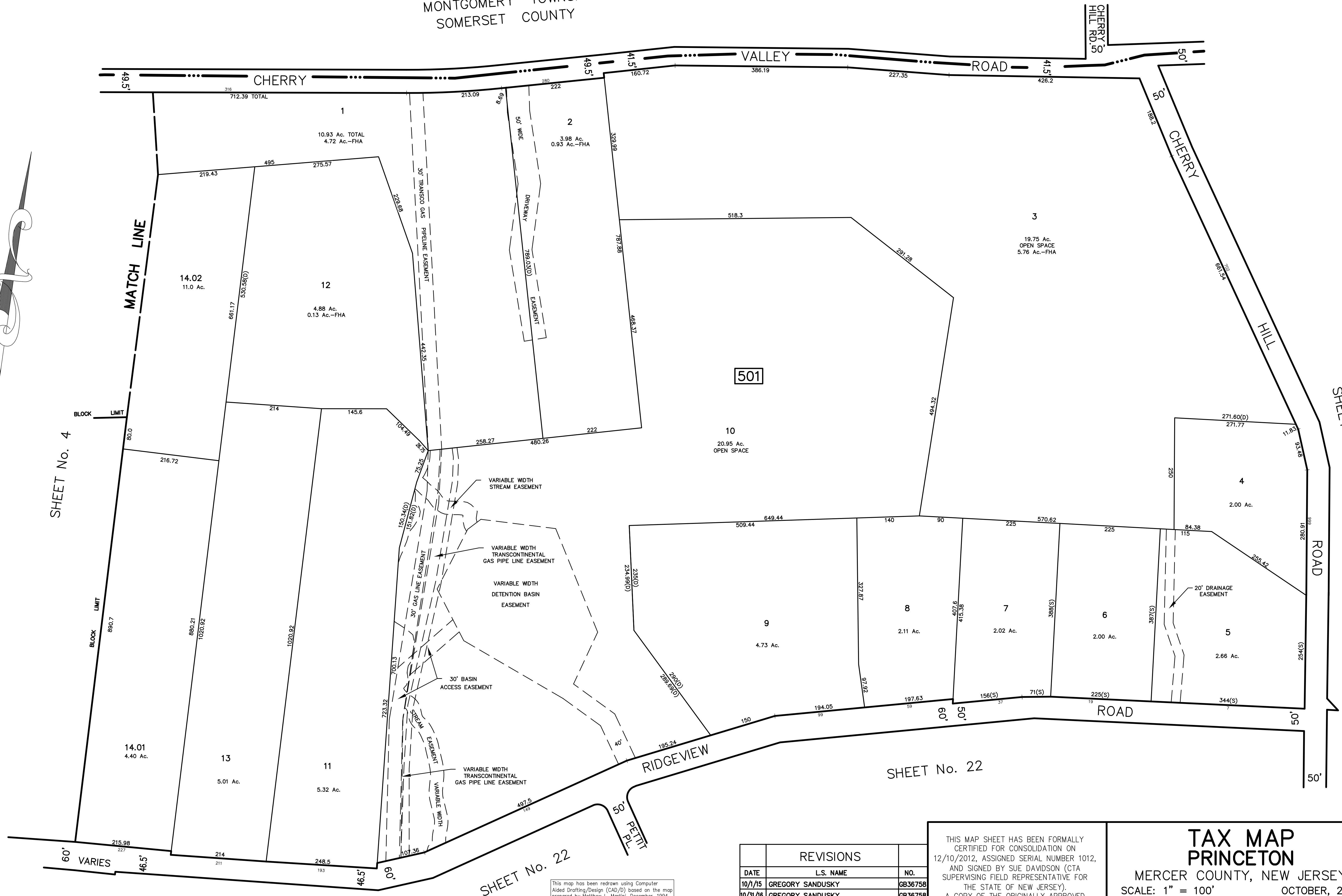


MONTGOMERY TOWNSHIP  
SOMERSET COUNTY



SHEET No. 4

SHEET No. 6

SHEET No. 22

SHEET No. 21

This map has been redrawn using Computer Aided Drafting/Design (CAD/D) based on the map prepared by Matthew L. Martini, December, 1994.

REVISIONS		
DATE	L.S. NAME	NO.
10/1/15	GREGORY SANDUSKY	GB36758
10/31/16	GREGORY SANDUSKY	GB36758
10/1/19	GREGORY SANDUSKY	GB36758

THIS MAP SHEET HAS BEEN FORMALLY CERTIFIED FOR CONSOLIDATION ON 12/10/2012, ASSIGNED SERIAL NUMBER 1012, AND SIGNED BY SUE DAVIDSON (CTA SUPERVISING FIELD REPRESENTATIVE FOR THE STATE OF NEW JERSEY). A COPY OF THE ORIGINALLY APPROVED MAPS ARE ON FILE AT THE MUNICIPALITY OF PRINCETON LOCATED AT 400 WITHERSPOON STREET, PRINCETON, NJ. THE NEW JERSEY STATE DIVISION OF TAXATION IS RETAINING THE OFFICIAL APPROVED MAPS.

**TAX MAP  
PRINCETON**  
MERCER COUNTY, NEW JERSEY  
SCALE: 1" = 100' OCTOBER, 2012  
DAVID B. DIXON, PLS  
Professional Land Surveyor N.J. Lic. No.27282  
OMLAND ENGINEERING ASSOCIATES, INC.  
CEDAR KNOLLS, NEW JERSEY  
To Show Conditions as of October, 2012