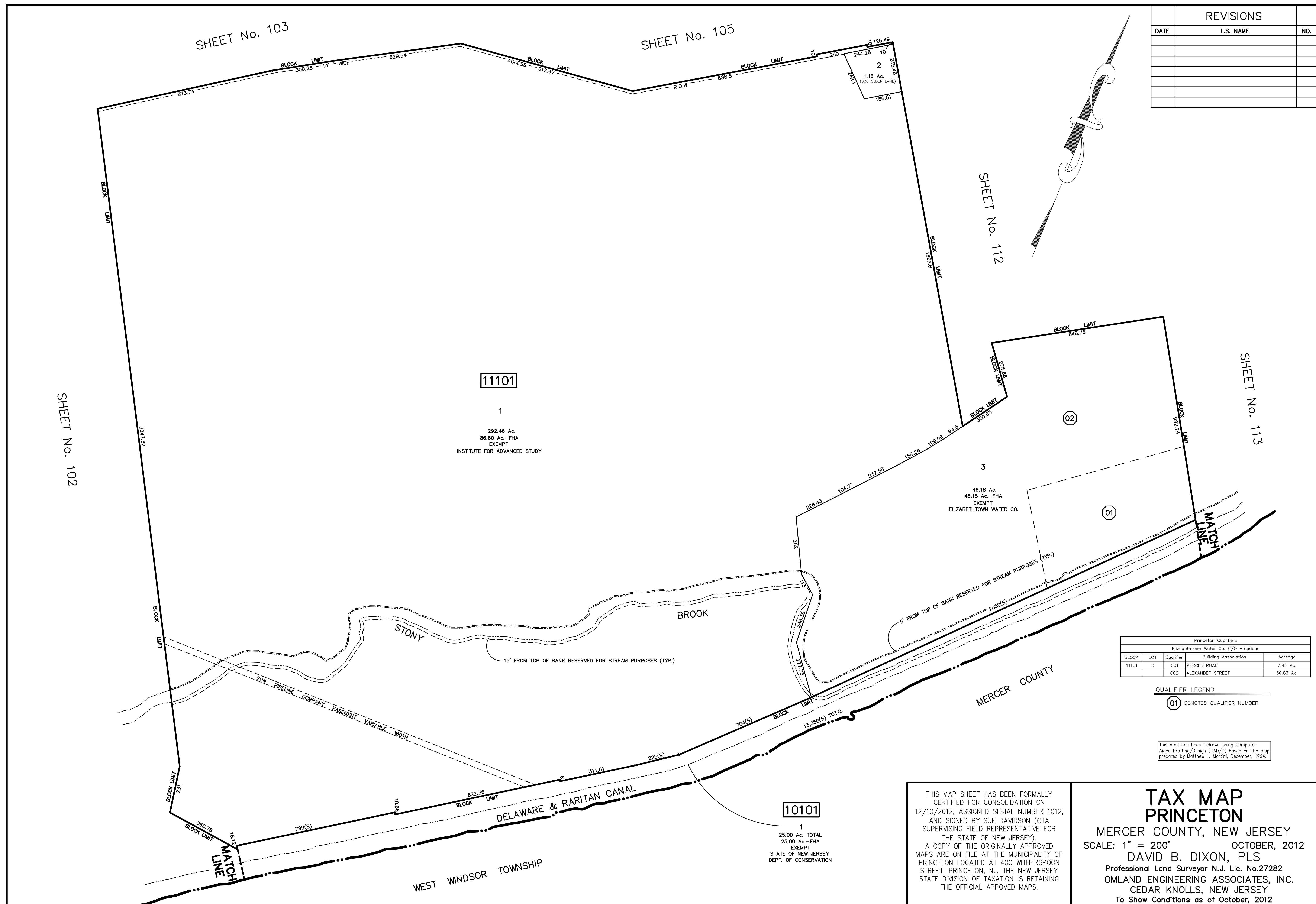


REVISIONS		
DATE	L.S. NAME	NO.



11101

1  
292.46 Ac.  
86.60 Ac.-FHA  
EXEMPT  
INSTITUTE FOR ADVANCED STUDY

SHEET No. 112

SHEET No. 113

SHEET No. 102

SHEET No. 103

SHEET No. 105

Princeton Qualifiers				
BLOCK	LOT	Qualifier	Building Association	Acreage
11101	3	C01	MERCER ROAD	7.44 Ac.
		C02	ALEXANDER STREET	36.83 Ac.

QUALIFIER LEGEND  
01 DENOTES QUALIFIER NUMBER

This map has been redrawn using Computer Aided Drafting/Design (CAD/D) based on the map prepared by Matthew L. Martini, December, 1994.

10101

1  
25.00 Ac. TOTAL  
25.00 Ac.-FHA  
EXEMPT  
STATE OF NEW JERSEY  
DEPT. OF CONSERVATION

THIS MAP SHEET HAS BEEN FORMALLY CERTIFIED FOR CONSOLIDATION ON 12/10/2012, ASSIGNED SERIAL NUMBER 1012, AND SIGNED BY SUE DAVIDSON (CTA SUPERVISING FIELD REPRESENTATIVE FOR THE STATE OF NEW JERSEY). A COPY OF THE ORIGINALLY APPROVED MAPS ARE ON FILE AT THE MUNICIPALITY OF PRINCETON LOCATED AT 400 WITHERSPOON STREET, PRINCETON, NJ. THE NEW JERSEY STATE DIVISION OF TAXATION IS RETAINING THE OFFICIAL APPROVED MAPS.

### TAX MAP PRINCETON

MERCER COUNTY, NEW JERSEY  
SCALE: 1" = 200'  
OCTOBER, 2012  
DAVID B. DIXON, PLS  
Professional Land Surveyor N.J. Lic. No.27282  
OMLAND ENGINEERING ASSOCIATES, INC.  
CEDAR KNOLLS, NEW JERSEY  
To Show Conditions as of October, 2012